



2863 Tucker Hill Drive
Grimesland, NC 27837

TUCKER HILL FARM - GARLAND

CONTACT OUR NEW HOME SPECIALISTS

MAGGIE & JESSICA

Call Us @ 910-405-8311

info@cavinessandcates.com



Priced

\$398,900

Elevation C

2,090 Sq Ft

1.5 Story

4 Beds

3.0 Baths

2 Car Garage

Primary Bedroom: Down

About 2863 Tucker Hill Drive

- Open concept great room with vaulted ceiling with faux wood beam and gas log fireplace with floating mantle stained in "Loft Pine".
- Kitchen with island and sink overlooking the great room, quartz countertops in "New Willow White", subway tile backsplash in "Arctic White" set in a brick pattern, white shaker cabinets, and pantry; Stainless steel microwave, dishwasher, and gas range.
- Dining area with access to rear covered porch.
- Primary suite with tray ceiling and crown molding; Primary bathroom with dual vanity with center

...Read More Online

About The Community.

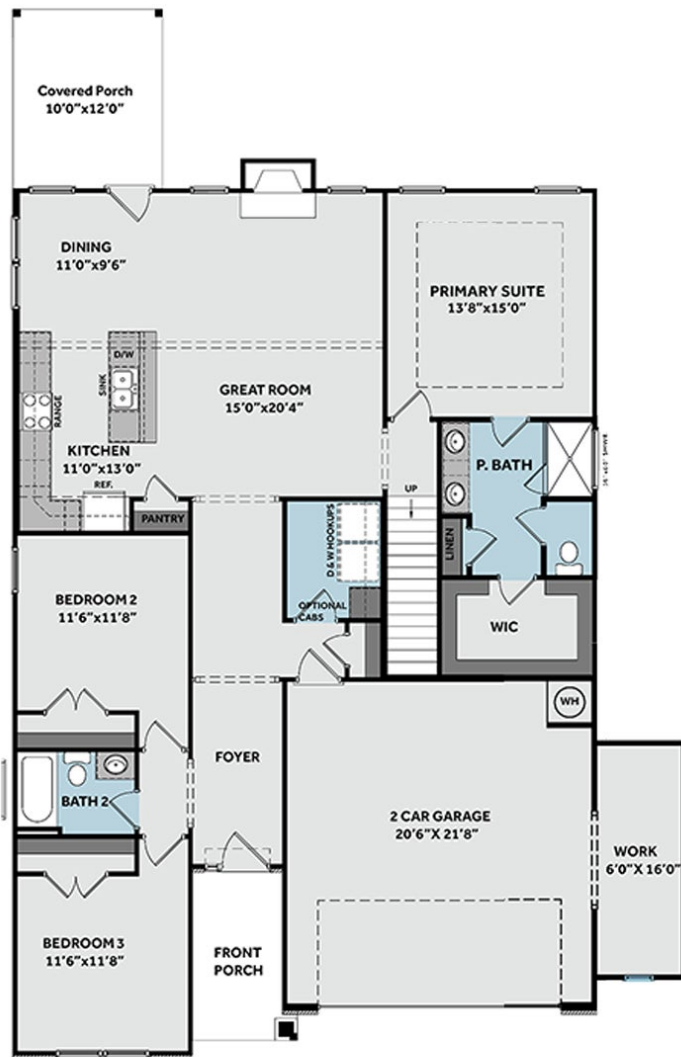
Find your place to call home in the new and private community of Tucker Hill Farm! Located just off of Tucker Road, Tucker Hill Farm is just 15 minutes from the shopping, dining, and entertainment of Uptown Greenville. With just 55 homes and homesites ranging up to over an acre, you can get the rural, quiet feel close to all of the local entertainment of the city. New homes feature our specially designed home plans, the quality construction you have come to expect, and the signature Caviness & Cates in-house 1-2-10 year home warranty.

...Read More Online

Prices, plans, dimensions, features, specifications, materials, and availability of homes or communities are subject to change without notice or obligation. Illustrations are artists depictions only and may differ from completed improvements. All prices subject to change without notice. Please contact your sales associate before writing an offer.



FIRST FLOOR



SECOND FLOOR

