



2876 Tucker Hill Drive  
Grimesland, NC 27837

**TUCKER HILL FARM - CAMBRIDGE**

CONTACT OUR NEW HOME SPECIALISTS

**MAGGIE & JESSICA**

Call Us @ 910-405-8311

info@cavinessandcates.com



**Priced**

**\$414,900**

2,432 Sq Ft

1.5 Story

4 Beds

3.0 Baths

3 Car Garage

Primary Bedroom: Down

## About 2876 Tucker Hill Drive

- The Cambridge home boasts a spacious great room featuring a natural gas fireplace with an "Absolute Black" surround and decorative mantle.
- The open kitchen, highlighted by an island with a sink overlooking the great room, showcases granite countertops in "Luna Pearl," subway tile backsplash in "Desert Gray" set in a brick pattern, white shaker cabinets, a pantry, and stainless steel appliances, including a microwave, dishwasher, and gas range.
- The kitchen seamlessly flows into a dining room with backyard views and direct access to a

...Read More Online

## About The Community.

Discover the charm of Tucker Hill Farm, a private community where modern living meets country tranquility! Nestled just off Tucker Road, this exclusive enclave of only 55 homes offers spacious homesites—some spanning over an acre—giving you room to breathe while staying just 15 minutes from the vibrant shopping, dining, and entertainment of Uptown Greenville.

Here, you'll find expertly designed home plans, superior craftsmanship, and the quality you expect—all backed by the signature Caviness & Cates 1-2-10 year in-house warranty. Escape the hustle and bustle

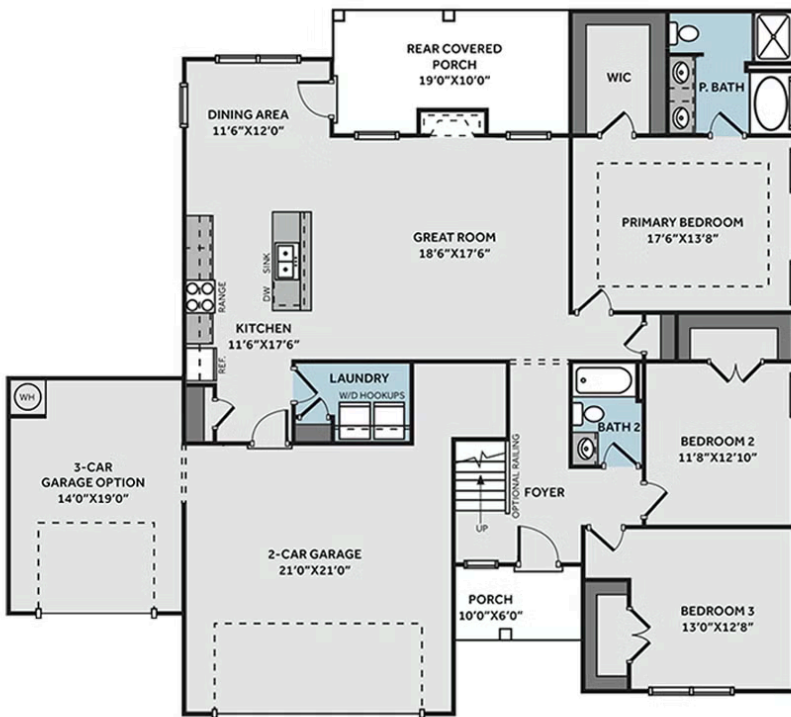


...Read More Online

Prices, plans, dimensions, features, specifications, materials, and availability of homes or communities are subject to change without notice or obligation. Illustrations are artists depictions only and may differ from completed improvements. All prices subject to change without notice. Please contact your sales associate before writing an offer.



## FIRST FLOOR



## SECOND FLOOR

