



2885 Tucker Hill Drive
Grimesland, NC 27837

TUCKER HILL FARM - GARLAND

CONTACT OUR NEW HOME SPECIALISTS

MAGGIE & JESSICA

Call Us @ 910-405-8311

info@cavinessandcates.com



Priced

\$384,800

2,090 Sq Ft

1.5 Story

3 Beds

3.0 Baths

2 Car Garage

Primary Bedroom: Down

About 2885 Tucker Hill Drive

- The Garland home offers an inviting open-concept great room featuring a vaulted ceiling with a faux wood beam, and a gas log fireplace with a floating mantle stained in "Grey Chestnut."
- The kitchen is thoughtfully designed with an island and sink overlooking the great room, quartz countertops in "New Willow White," a subway tile backsplash in "Desert Gray" set in a brick pattern, white shaker cabinets, a pantry, and stainless steel appliances, including a microwave, dishwasher, and gas range.
- The adjacent dining area provides access to the rear covered porch, perfect for outdoor dining.

[...Read More Online](#)

About The Community.

Discover the charm of Tucker Hill Farm, a private community where modern living meets country tranquility! Nestled just off Tucker Road, this exclusive enclave of only 55 homes offers spacious homesites—some spanning over an acre—giving you room to breathe while staying just 15 minutes from the vibrant shopping, dining, and entertainment of Uptown Greenville.

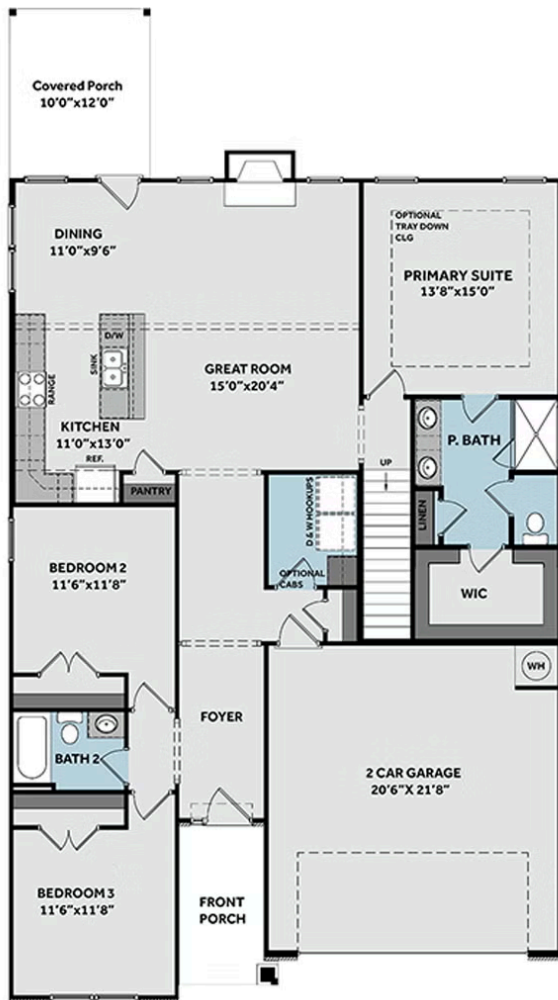
Here, you'll find expertly designed home plans, superior craftsmanship, and the quality you expect—all backed by the signature Caviness & Cates 1-2-10 year in-house warranty. Escape the hustle and bustle without sacrificing convenience—Tucker Hill Farm is waiting to welcome you home!

[...Read More Online](#)

Prices, plans, dimensions, features, specifications, materials, and availability of homes or communities are subject to change without notice or obligation. Illustrations are artists depictions only and may differ from completed improvements. All prices subject to change without notice. Please contact your sales associate before writing an offer.



FIRST FLOOR



SECOND FLOOR

