



2893 Tucker Hill Drive  
Grimesland, NC 27837

**TUCKER HILL FARM - BLADEN**

CONTACT OUR NEW HOME SPECIALISTS

**MAGGIE & JESSICA**

Call Us @ 910-405-8311

info@cavinessandcates.com



**Priced**

**\$499,900**

3,107 Sq Ft

1.5 Story

5 Beds

3.0 Baths

2 Car Garage

Primary Bedroom: Down

## About 2893 Tucker Hill Drive

- Upon entering the home, you are welcomed into the foyer, where a flex room and formal dining room sit across from each other, creating a warm and inviting entryway.
- The foyer opens into the spacious great room, where a corner gas log fireplace with a decorative mantel and "Absolute Black" granite surround serves as a focal point.
- The open-concept kitchen overlooks the great room and breakfast area, featuring an island, white shaker cabinets, "Azul Platino" granite countertops, an "Arctic White" brick-pattern subway tile backsplash, and a suite of stainless steel appliances—including a microwave, dishwasher, and gas

[...Read More Online](#)

## About The Community.

Discover the charm of Tucker Hill Farm, a private community where modern living meets country tranquility! Nestled just off Tucker Road, this exclusive enclave of only 55 homes offers spacious homesites—some spanning over an acre—giving you room to breathe while staying just 15 minutes from the vibrant shopping, dining, and entertainment of Uptown Greenville.

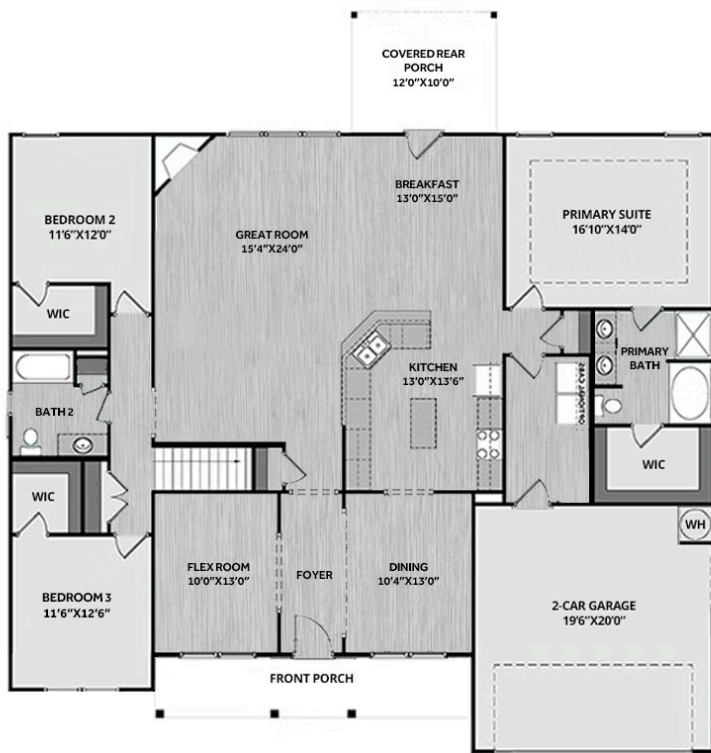
Here, you'll find expertly designed home plans, superior craftsmanship, and the quality you expect—all backed by the signature Caviness & Cates 1-2-10 year in-house warranty. Escape the hustle and bustle without sacrificing convenience—Tucker Hill Farm is waiting to welcome you home!

[...Read More Online](#)

Prices, plans, dimensions, features, specifications, materials, and availability of homes or communities are subject to change without notice or obligation. Illustrations are artists depictions only and may differ from completed improvements. All prices subject to change without notice. Please contact your sales associate before writing an offer.



## FIRST FLOOR



## SECOND FLOOR

