



2931 Tucker Hill Drive
Grimesland, NC 27837

TUCKER HILL FARM - CAMELLIA

CONTACT OUR NEW HOME SPECIALISTS

MAGGIE & JESSICA

Call Us @ 910-405-8311

info@cavinessandcates.com



Priced

\$405,900

Elevation C- Artistic Rendering for representation purposes only

2,358 Sq Ft

2.0 Story

4 Beds

2.5 Baths

3 Car Garage

Primary Bedroom: Down

About 2931 Tucker Hill Drive

- Upon entering the home, a dining room is located off the foyer with direct access to the kitchen.
- The mudroom, located just off the entry, provides access to both the garage and a half-bath.
- The kitchen offers ample countertop space with granite countertops in "Azul Platino," a sink overlooking the great room, bar seating, white shaker cabinets, subway tile backsplash in "Arctic White" set in a brick pattern, a pantry, and stainless steel appliances including a microwave, dishwasher, and gas range.
- The spacious great room features a natural gas fireplace with a decorative mantle and granite

...Read More Online

About The Community.

Discover the charm of Tucker Hill Farm, a private community where modern living meets country tranquility! Nestled just off Tucker Road, this exclusive enclave of only 55 homes offers spacious homesites—some spanning over an acre—giving you room to breathe while staying just 15 minutes from the vibrant shopping, dining, and entertainment of Uptown Greenville.

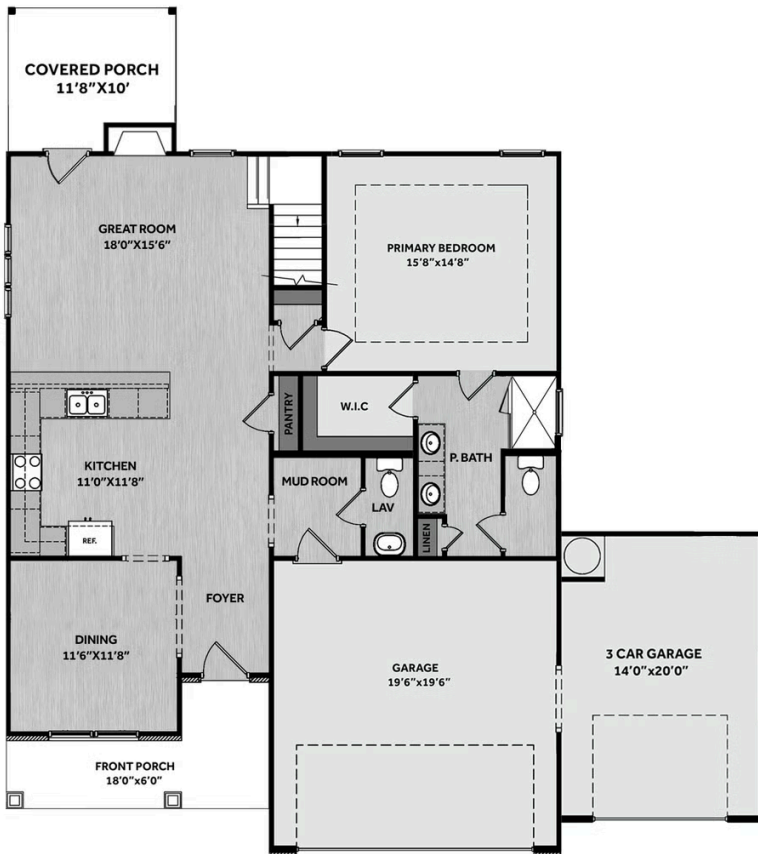
Here, you'll find expertly designed home plans, superior craftsmanship, and the quality you expect—all backed by the signature Caviness & Cates 1-2-10 year in-house warranty. Escape the hustle and bustle

...Read More Online

Prices, plans, dimensions, features, specifications, materials, and availability of homes or communities are subject to change without notice or obligation. Illustrations are artists depictions only and may differ from completed improvements. All prices subject to change without notice. Please contact your sales associate before writing an offer.



FIRST FLOOR



SECOND FLOOR

