



2980 Tucker Hill Drive
Grimesland, NC 27837

TUCKER HILL FARM - GARLAND

CONTACT OUR NEW HOME SPECIALISTS

MAGGIE & JESSICA

Call Us @ 910-405-8311

info@cavinessandcates.com



Priced

\$415,000

2,090 Sq Ft

1.5 Story

4 Beds

3.0 Baths

2 Car Garage

Primary Bedroom: Down

About 2980 Tucker Hill Drive

***Limited Time Offer! Get \$10,000 as a "Use As You Choose" builder incentive to be used toward closing costs, rate buydown, and/or design studio upgrades! Conditions apply.**

- This home offers stylish, low-maintenance living with an open-concept great room featuring a vaulted ceiling with faux wood beam and a gas log fireplace with a decorative mantle and black granite surround.
- The kitchen overlooks the great room and features "Arctic White" quartz countertops, white shaker

...Read More Online

About The Community.

Discover the charm of Tucker Hill Farm, a private community where modern living meets country tranquility! Nestled just off Tucker Road, this exclusive enclave of only 55 homes offers spacious homesites—some spanning over an acre—giving you room to breathe while staying just 15 minutes from the vibrant shopping, dining, and entertainment of Uptown Greenville.

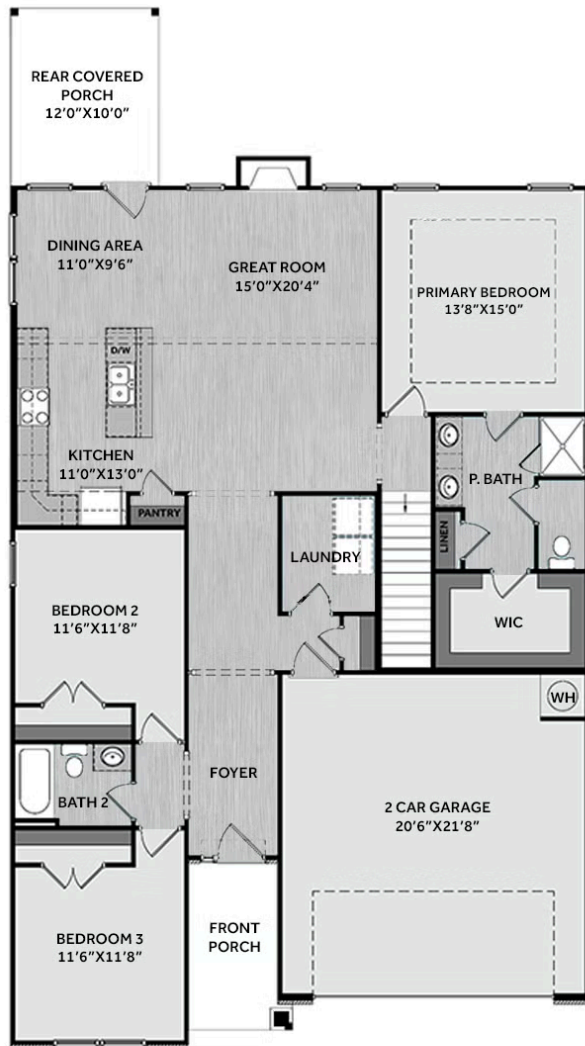
Here, you'll find expertly designed home plans, superior craftsmanship, and the quality you expect—all backed by the signature Caviness & Cates 1-2-10 year in-house warranty. Escape the hustle and bustle without sacrificing convenience—Tucker Hill Farm is waiting to welcome you home!

...Read More Online

Prices, plans, dimensions, features, specifications, materials, and availability of homes or communities are subject to change without notice or obligation. Illustrations are artists depictions only and may differ from completed improvements. All prices subject to change without notice. Please contact your sales associate before writing an offer.



FIRST FLOOR



SECOND FLOOR

