



3,085 - 3,281 Sq. Ft.

2.5 Stories

5 Bed

3.5 Bath

2 - 3 Garage

Master Bed: Up

## About Kendleton

- Formal dining room with coffered ceiling and wainscoting detail option and added window option
- Kitchen with breakfast area, island, and butler pantry with optional base and wall cabinets and added window option; access to optional covered porch and/or Carolina Room; gourmet appliance layout option
- Great Room with optional fireplace or window
- Half bath with pedestal sink and oval mirror
- Optional coat station in garage entryway

...Read More Online

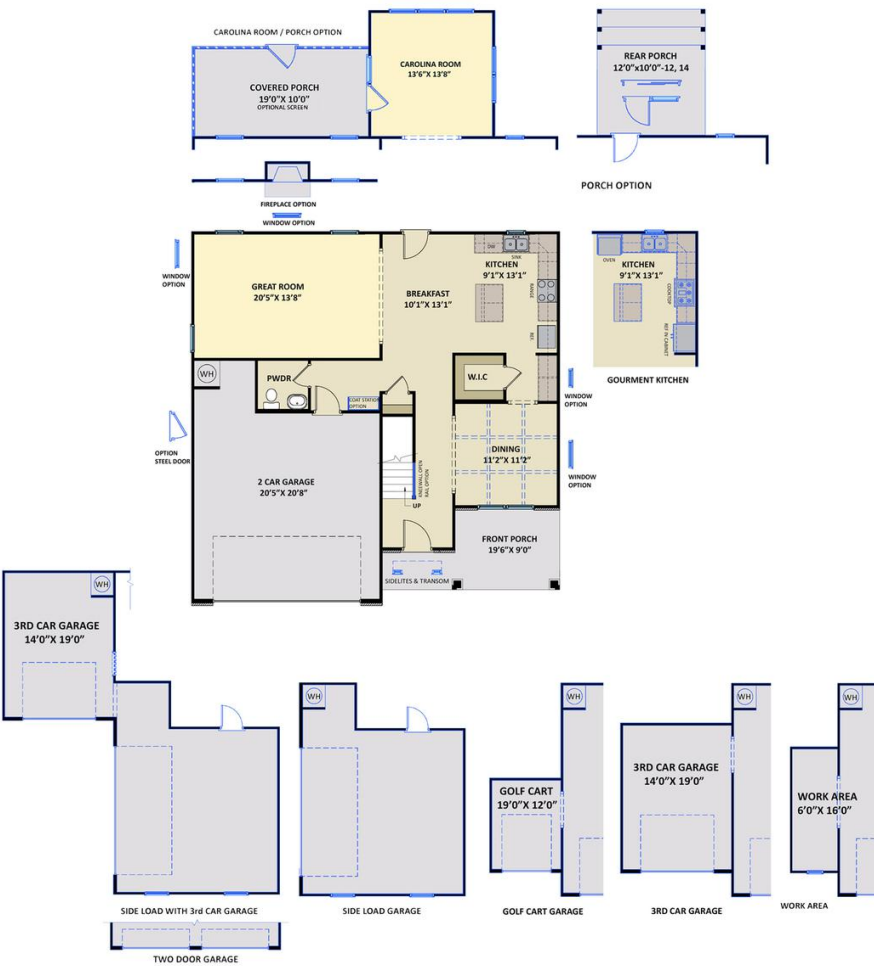


Elevation E

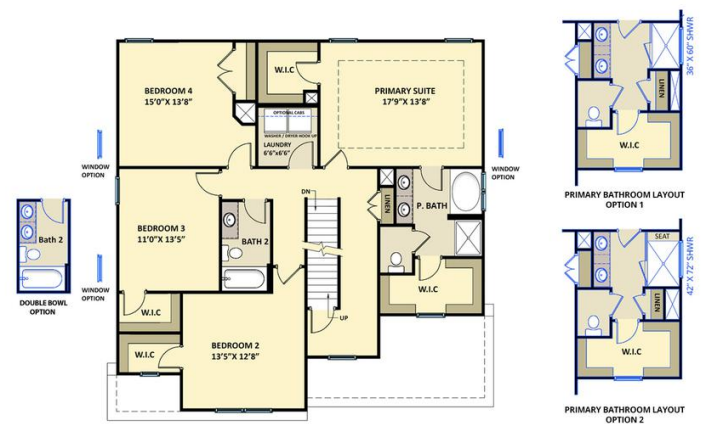
The Kendleton

CC2343

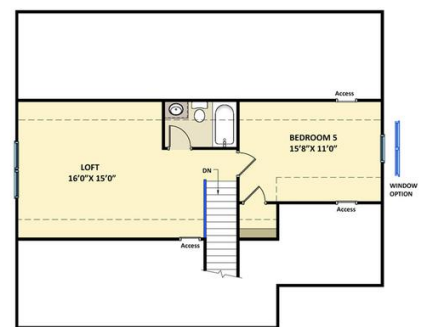
FIRST FLOOR



SECOND FLOOR



THIRD FLOOR



Prices, plans, dimensions, features, specifications, materials, and availability of homes or communities are subject to change without notice or obligation. Illustrations are artists depictions only and may differ from completed improvements. All prices subject to change without notice. Please contact your sales associate before writing an offer.