



74 Sailor Sky Way
Hampstead, NC 28443
WYNDWATER - LIBERTY

CONTACT OUR NEW HOME SPECIALIST
JENN HUNTOON
Call Us @ 910-405-8311
jenn@cavinessandcates.com



Priced
\$384,900

Elevation C
2,657 Sq Ft
1.5 Story
4 Beds
3.0 Baths
3 Car Garage
Master Bedroom: Down

About 74 Sailor Sky Way

- Open gourmet kitchen features granite countertops; white cabinets; subway tile backsplash; stainless steel double wall ovens, microwave, dishwasher, and smooth cooktop; satin nickel finishes; corner pantry with wood shelving and frosted glass door; breakfast area; and an island with a single bowl sink overlooking the great room!
- Great room with gas log fireplace and built-in shelves, separate sitting area, and cathedral ceiling
- Covered porch and grill patio creates a perfect outdoor space.
- Elegant formal dining room with stunning coffered ceiling and wainscoting detail.

...Read More Online

About The Community.

FINAL OPPORTUNITY!

One of the many benefits to living in a Southern coastal community, is that every day is an opportunity to embrace a healthy, laid-back lifestyle—and WyndWater nurtures your inner journey by offering the practical ease and natural delights that so many of us yearn for in today's world. This community features sidewalk-lined roads, mature trees, natural landscapes, shared green spaces, sparkling ponds, beautiful fountains, lakes, and covered gazebos.

A brisk walk will carry you from the sidewalks of WyndWater to the Kiwanis Park off Sloop Point Loop Road. With sports fields, a playground, a picnic shelter, and more, you can mingle with other Hampstead-

...Read More Online

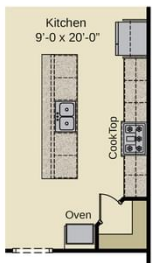
Prices, plans, dimensions, features, specifications, materials, and availability of homes or communities are subject to change without notice or obligation. Illustrations are artists depictions only and may differ from completed improvements. All prices subject to change without notice. Please contact your sales associate before writing an offer.



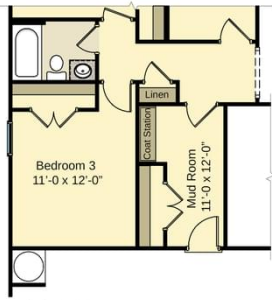
The Liberty
CC2322

FIRST FLOOR

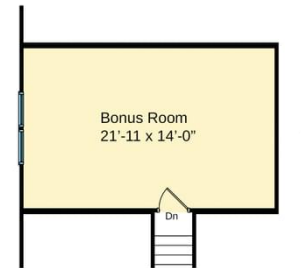
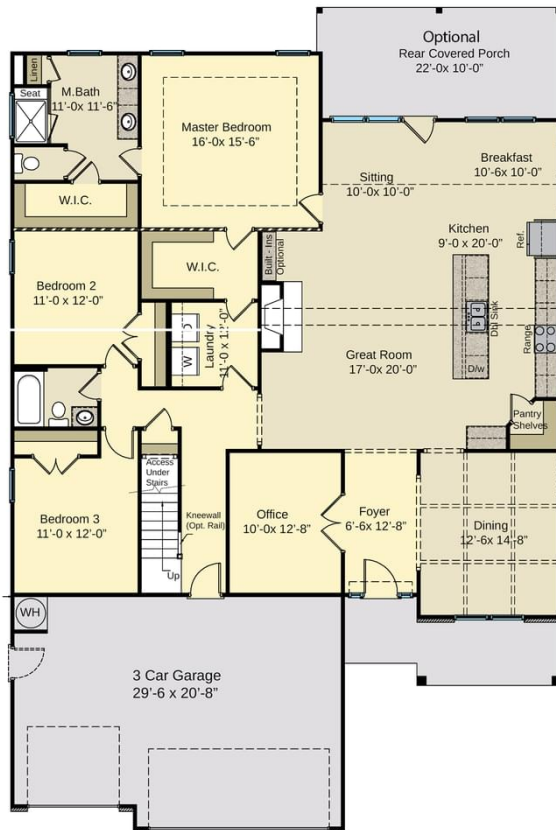
SECOND FLOOR (Optional)



Gourmet Kitchen
1/4" = 1'-0" (OPTIONAL)



Mud Room
1/4" = 1'-0" (NO STAIRS / BONUS ROOM)



Second Floor Plan
1/4" = 1'-0" (OPTIONAL BONUS ROOM)



Second Floor Plan
1/4" = 1'-0" (OPTIONAL BONUS w/ BATH)

Prices, plans, dimensions, features, specifications, materials, and availability of homes or communities are subject to change without notice or obligation. Illustrations are artists depictions only and may differ from completed improvements. All prices subject to change without notice. Please contact your sales associate before writing an offer.