



6812 Running Fox Rd  
Hope Mills, NC 28348

**THE MEADOWS AT ROSLIN FARMS WEST -  
PAGE**

CONTACT OUR NEW HOME SPECIALISTS

**MAGGIE & JESSICA**

Call Us @ 910-405-8311

info@cavinessandcates.com



**Priced**

**\$449,050**

Elevation TW

2,927 Sq Ft

2.0 Story

4 Beds

3.5 Baths

2 Car Garage

Master Bedroom: Down

## About 6812 Running Fox Rd

- First-floor primary suite with tray ceiling and crown molding; primary bathroom with walk-in closet, dual sinks with quartz countertops in "Niagara", "Maple Charcoal" shaker cabinets with center drawer stack, garden soaking tub with tile surround, tub to ceiling tile shower, linen closet, private water closet, and tile flooring.
- Great room with built-in shelving in "Maple Charcoal" with quartz countertop lower cabinets and upper shelving, gas log fireplace with decorative mantle and surround in "Arctic Grey Marble" and access to covered porch.

...Read More Online

## About The Community.

Discover the tranquil serenity homeowners experience when living in the Roslin Farms community. With room to roam and expansive places to play, homeowners benefit from quiet living with the convenience of the city just outside the community's entrance.

A family-friendly neighborhood located near all the city of Fayetteville has to offer. Take advantage of healthcare facilities and area golf courses, state parks, and more. Just minutes from shopping centers, local restaurants, and various attractions, Roslin Farms is the perfect place to call home. Close to I-95 and the Fayetteville Regional Airport. Offering charming, energy-efficient new homes on spacious +/- half-acre homesites!

...Read More Online

Prices, plans, dimensions, features, specifications, materials, and availability of homes or communities are subject to change without notice or obligation. Illustrations are artists depictions only and may differ from completed improvements. All prices subject to change without notice. Please contact your sales associate before writing an offer.

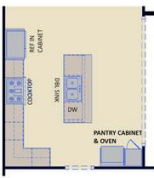


The Page  
CC2927

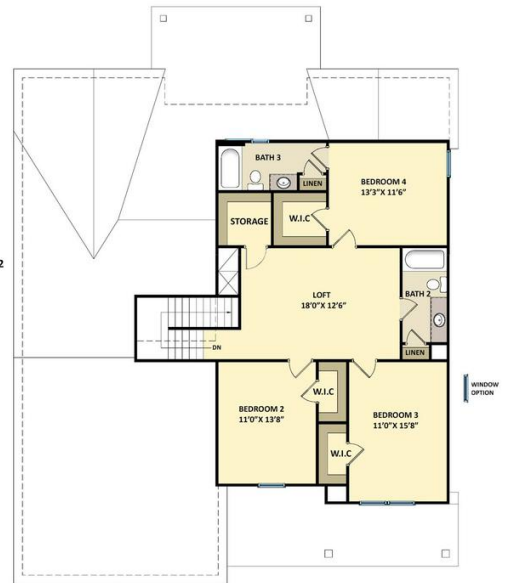
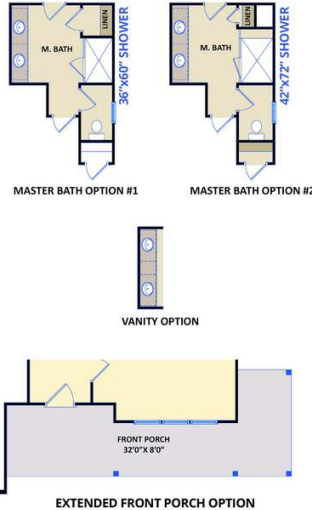
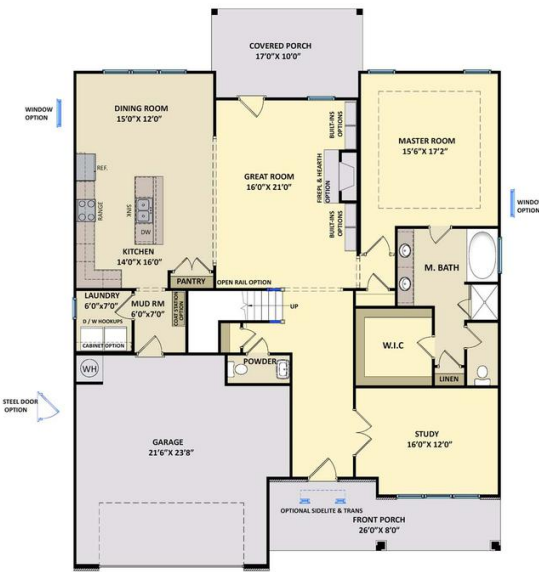
FIRST FLOOR

SECOND FLOOR

- (2) 2/8" FULL LITE DOORS (80%/20) = 2-1/4" WALL
  - 5/8" TRIPLE SLIDER IN 2-1/4" WALL
  - 6/8" SLIDER
  - 1/4" FULL LITE DOUBLE OPERABLE
  - 1/4" FULL LITE ATRIUM DOOR
- GREAT ROOM DOOR OPTIONS



GOURMET KITCHEN



DOUBLE SINK OPTION

