



2,355 Sq. Ft.

2 Stories

4 Bed

2.5 Bath

Master Bed: Up

About Brunswick

The open-concept Brunswick home plan gets its name from the coastal Brunswick County, NC! Homeowners love this plan for family living and have made it our #1 most popular plan in 2018! Make the Brunswick your place to call home!

- The entrance of this 2 story home showcases a 2 story ceiling with hanging decorative light fixture.
- Eat-in kitchen with large island, walk-in pantry, desk and window over kitchen sink with views to the backyard.
- Optional covered porch and/or grill patio creates a perfect outdoor space.

...Read More Online



Elevation B



Elevation C

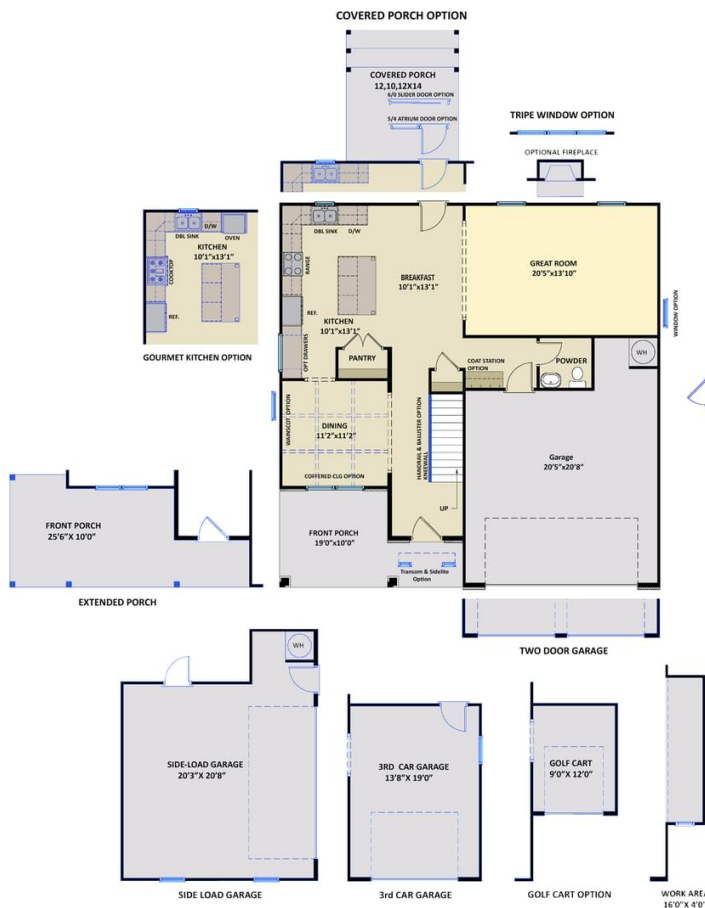


Elevation K

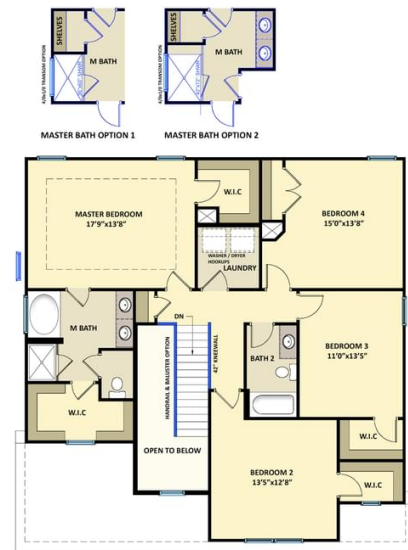
Prices, plans, dimensions, features, specifications, materials, and availability of homes or communities are subject to change without notice or obligation. Illustrations are artists depictions only and may differ from completed improvements. All prices subject to change without notice. Please contact your sales associate before writing an offer.

The Brunswick
CC2355

FIRST FLOOR



SECOND FLOOR



Prices, plans, dimensions, features, specifications, materials, and availability of homes or communities are subject to change without notice or obligation. Illustrations are artists depictions only and may differ from completed improvements. All prices subject to change without notice. Please contact your sales associate before writing an offer.

