



228 Clear View School Road
Jacksonville, NC 28540

HAYDEN PLACE - DRAYTON

CONTACT OUR NEW HOME SPECIALISTS

MAGGIE & JESSICA

Call Us @ 910-405-8311

info@cavinessandcates.com



Priced

\$379,900

2,325 Sq Ft

2.0 Story

4 Beds

2.5 Baths

2 Car Garage

Primary Bedroom: Up

About 228 Clear View School Road

- Flex room with french doors off of foyer.
- Kitchen with island is open to breakfast area and great room, granite countertops in "Giallo Ornamentale Guidoni", subway tile backsplash in "Biscuit" set in a brick pattern, white shaker cabinets, corner pantry, and sink with views to the backyard; Stainless steel microwave, dishwasher, and smooth top range.
- Rear covered porch makes for the perfect outdoor space and is easily accessible through the breakfast area!

[...Read More Online](#)

About The Community.

COMING EARLY 2026

Why join the priority information list?

- ✓ Be the first to know - Get updates before the public on pricing, floorplans, and availability.
- ✓ Early access to pre-sales - Reserve your homesite and home plan before it's released to everyone else.

Designed with families in mind, Hayden Place offers the perfect blend of convenience, community, and natural beauty. Enjoy peaceful nature views while being just a short walk to Clearview Elementary, making school drop-offs a breeze. Plus, with Camp Lejeune just 11.5 miles away, MCAS New River's Main

[...Read More Online](#)

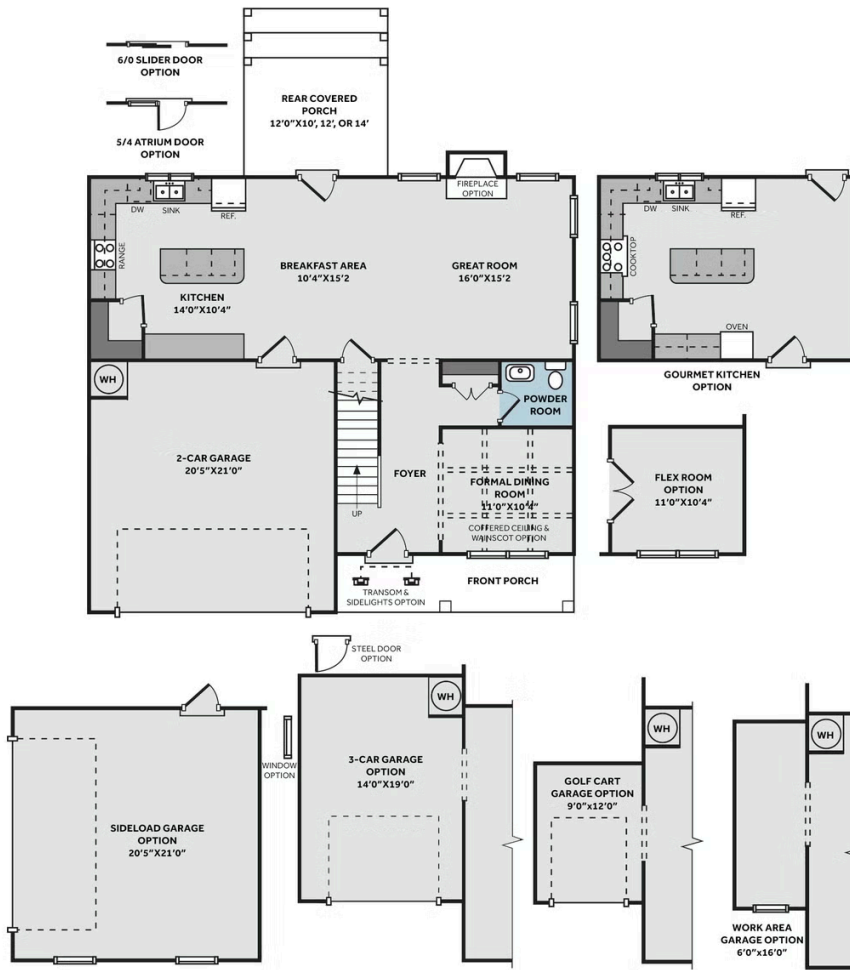
Prices, plans, dimensions, features, specifications, materials, and availability of homes or communities are subject to change without notice or obligation. Illustrations are artists depictions only and may differ from completed improvements. All prices subject to change without notice. Please contact your sales associate before writing an offer.



THE DRAYTON

CC2325

FIRST FLOOR



SECOND FLOOR

