



243 Clear View School Road
Jacksonville, NC 28540

HAYDEN PLACE - ONSLOW

CONTACT OUR NEW HOME SPECIALISTS

MAGGIE & JESSICA

Call Us @ 910-405-8311

info@cavinessandcates.com



Priced

\$359,900

1,885 Sq Ft

2.0 Story

3 Beds

2.5 Baths

3 Car Garage

Primary Bedroom: Up

About 243 Clear View School Road

- The Onslow home features a foyer with access to a half-bath, leading to a spacious great room open to the kitchen and dining area.
- The kitchen offers countertop bar seating, granite countertops in "New Caledonia," white shaker cabinets, a pantry, and a stainless steel microwave, dishwasher, and smooth top range.
- The open dining area has sliding door access to a rear covered porch.
- The second floor boasts a primary suite with two separate walk-in closets and a bathroom with tile flooring, a dual sink vanity, quartz countertop in "Niagara," white shaker cabinets, and a private

...Read More Online

About The Community.

COMING EARLY 2026

Why join the priority information list?

- ✓ Be the first to know - Get updates before the public on pricing, floorplans, and availability.
- ✓ Early access to pre-sales - Reserve your homesite and home plan before it's released to everyone else.

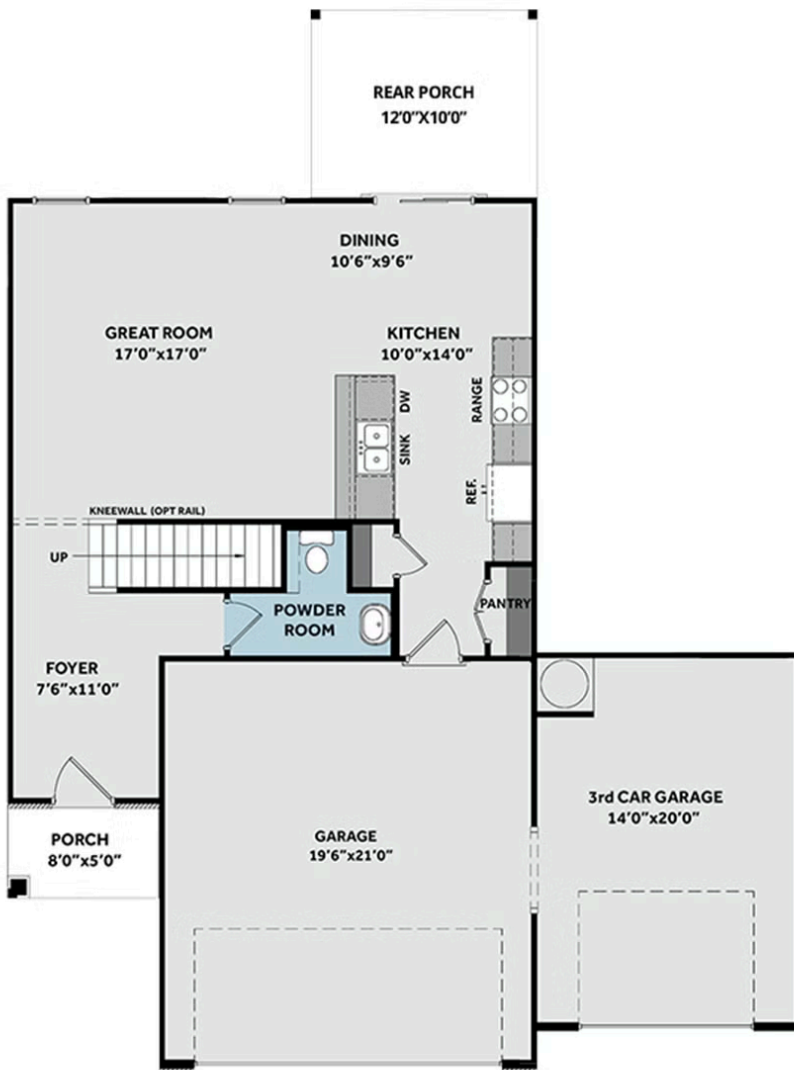
Designed with families in mind, Hayden Place offers the perfect blend of convenience, community, and natural beauty. Enjoy peaceful nature views while being just a short walk to Clearview Elementary, making school drop-offs a breeze. Plus, with Camp Lejeune just 11.5 miles away, MCAS New River's Main

...Read More Online

Prices, plans, dimensions, features, specifications, materials, and availability of homes or communities are subject to change without notice or obligation. Illustrations are artists depictions only and may differ from completed improvements. All prices subject to change without notice. Please contact your sales associate before writing an offer.



FIRST FLOOR



SECOND FLOOR

