



244 Clear View School Road
Jacksonville, NC 28540

HAYDEN PLACE - MAGNOLIA

CONTACT OUR NEW HOME SPECIALISTS

MAGGIE & JESSICA

Call Us @ 910-405-8311

info@cavinessandcates.com



Priced

\$392,000

2,642 Sq Ft

2.0 Story

4 Beds

2.5 Baths

2 Car Garage

Primary Bedroom: Up

About 244 Clear View School Road

- Flex Room with french doors off of foyer.
- Open Great Room with electric corner fireplace with decorative mantle and granite surround in "Absolute Black"; Access to covered porch through sliding door.
- Kitchen with island and breakfast area, granite countertops in "Santa Cecilia Light", subway tile backsplash in "Arctic White" set in a herringbone pattern, white shaker cabinets, sink with window overlooking backyard, and corner pantry; Stainless steel microwave, dishwasher, and smooth top range.

[...Read More Online](#)

About The Community.

COMING EARLY 2026

Why join the priority information list?

- ✓ Be the first to know - Get updates before the public on pricing, floorplans, and availability.
- ✓ Early access to pre-sales - Reserve your homesite and home plan before it's released to everyone else.

Designed with families in mind, Hayden Place offers the perfect blend of convenience, community, and natural beauty. Enjoy peaceful nature views while being just a short walk to Clearview Elementary, making school drop-offs a breeze. Plus, with Camp Lejeune just 11.5 miles away, MCAS New River's Main

[...Read More Online](#)

Prices, plans, dimensions, features, specifications, materials, and availability of homes or communities are subject to change without notice or obligation. Illustrations are artists depictions only and may differ from completed improvements. All prices subject to change without notice. Please contact your sales associate before writing an offer.

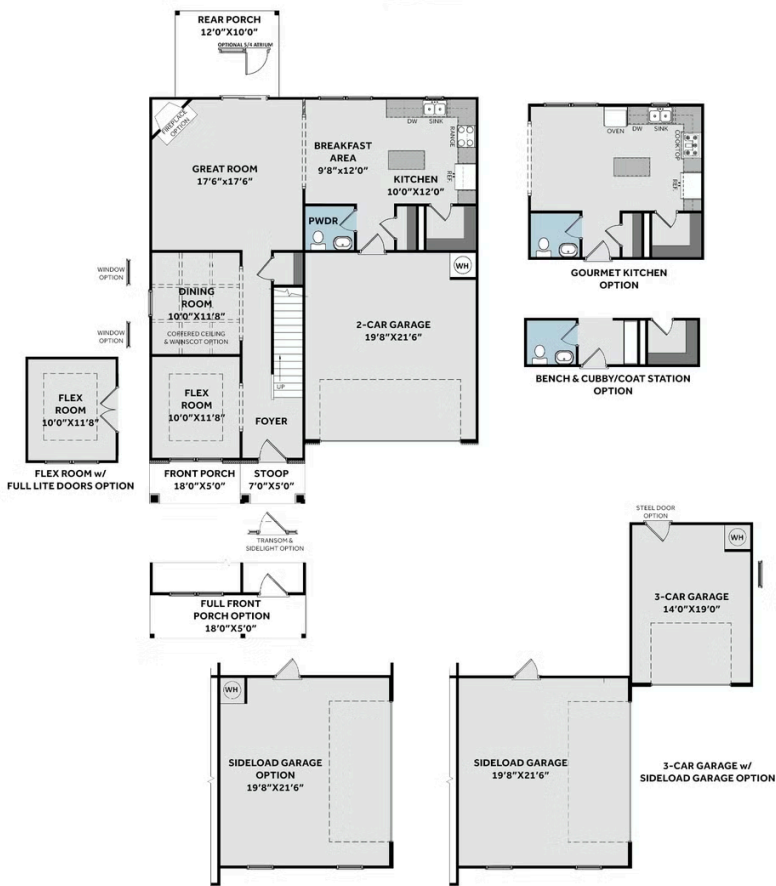


*CORNER FIREPLACE - PRE 4/1/2024

THE MAGNOLIA

CC2642

FIRST FLOOR



SECOND FLOOR

