



245 Clear View School Road
Jacksonville, NC 28540

HAYDEN PLACE - SPRINGFIELD

CONTACT OUR NEW HOME SPECIALISTS

MAGGIE & JESSICA

Call Us @ 910-405-8311

info@cavinessandcates.com



Priced

\$377,900

Similar Home-Different Elevation

1,884 Sq Ft

2.0 Story

4 Beds

2.5 Baths

3 Car Garage

Primary Bedroom: Up

About 245 Clear View School Road

- The Springfield floorplan boasts a spacious great room that seamlessly connects to the kitchen and dining area, creating a welcoming and open living space.
- A rear-covered porch, easily accessible through the great room, offers the perfect outdoor retreat.
- The kitchen features a sink overlooking the great room, granite countertops in "Luna Pearl," white shaker cabinets, a corner pantry, and an open dining area with backyard views, along with stainless steel appliances including a microwave, dishwasher, and smooth top range.
- The main level includes a convenient half-bath with a pedestal sink and oval mirror.

...Read More Online

About The Community.

Built with families in mind, Hayden Place offers nature views and is walkable to the local elementary school and located just 11.5 miles to Camp Lejeune, 8.4 MILES to MCAS New River's Main Gate and 12 minutes to downtown Jacksonville. Your new *Place to Call Home* is built with the quality of construction you've come to expect from a Caviness & Cates home; including our in-house 1-2-10 year home warranty, thoughtfully designed home plans, and stunning included design features.

Residents will find all they need to entertain their whole family at Hayden Place. From proposed

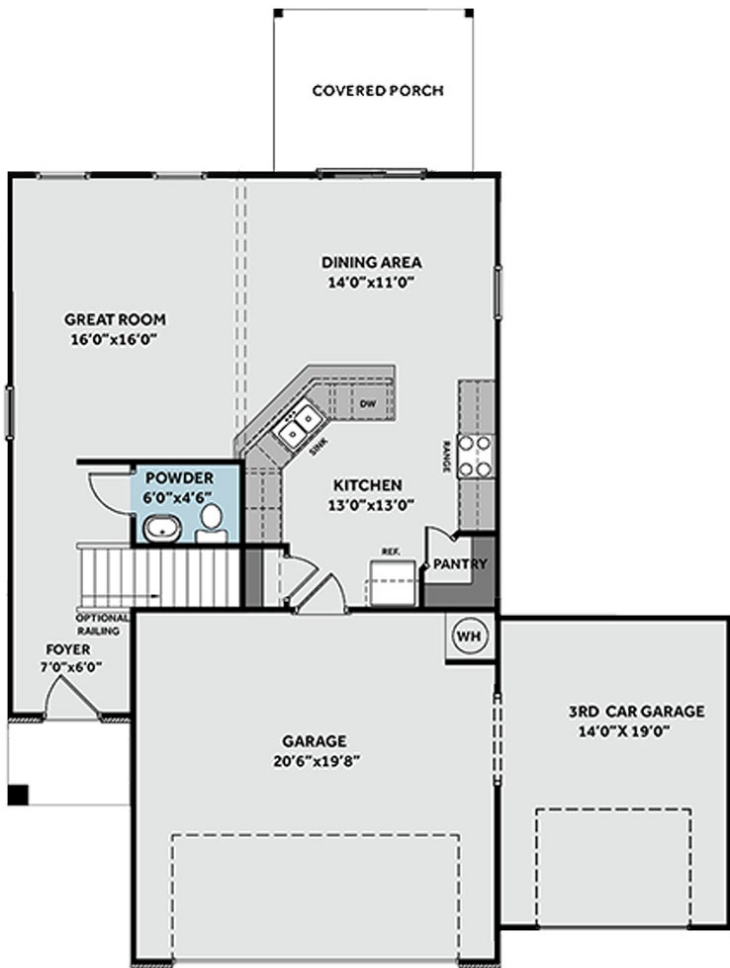


...Read More Online

Prices, plans, dimensions, features, specifications, materials, and availability of homes or communities are subject to change without notice or obligation. Illustrations are artists depictions only and may differ from completed improvements. All prices subject to change without notice. Please contact your sales associate before writing an offer.



FIRST FLOOR



SECOND FLOOR

