



254 Clear View School Road
Jacksonville, NC 28540

HAYDEN PLACE - BAILEY

CONTACT OUR NEW HOME SPECIALISTS

MAGGIE & JESSICA

Call Us @ 910-405-8311

info@cavinessandcates.com



Priced

\$399,900

Elevation F

2,424 Sq Ft

2.5 Story

4 Beds

2.5 Baths

2 Car Garage

Primary Bedroom: Up

About 254 Clear View School Road

- The Bailey floorplan offers a spacious Great Room that seamlessly connects to the kitchen, creating an inviting and open living space.
- The kitchen features an island with a breakfast nook extension, granite countertops in "Azul Platino," white shaker cabinets, a pantry, and a dining area. It comes equipped with stainless steel appliances, including a microwave, dishwasher, and smooth top range.
- A rear-covered porch, accessible through the dining area, is perfect for entertaining.
- The main level includes a convenient half-bath with a pedestal sink and oval mirror.

...Read More Online

About The Community.

Built with families in mind, Hayden Place offers nature views and is walkable to the local elementary school and located just 11.5 miles to Camp Lejeune, 8.4 MILES to MCAS New River's Main Gate and 12 minutes to downtown Jacksonville. Your new *Place to Call Home* is built with the quality of construction you've come to expect from a Caviness & Cates home; including our in-house 1-2-10 year home warranty, thoughtfully designed home plans, and stunning included design features.

Residents will find all they need to entertain their whole family at Hayden Place. From proposed

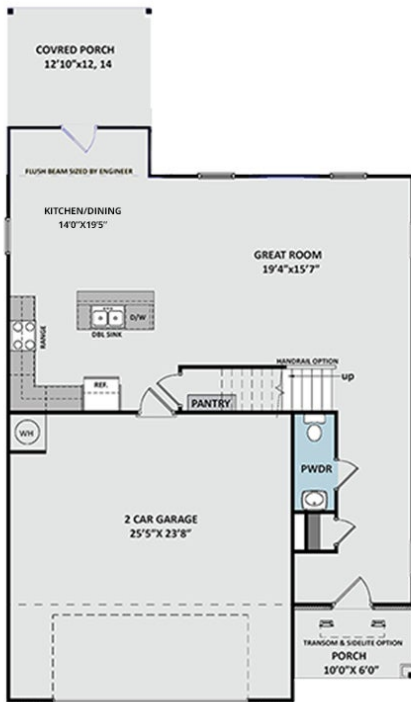


...Read More Online

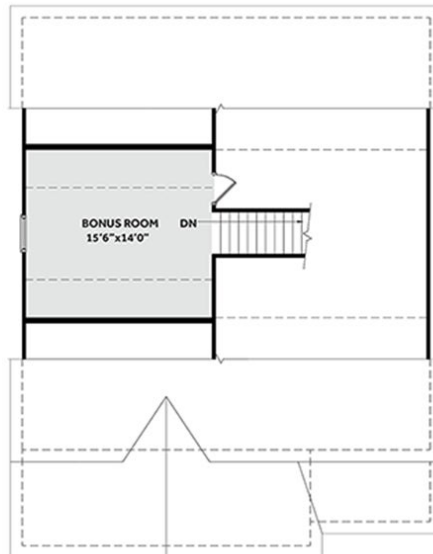
Prices, plans, dimensions, features, specifications, materials, and availability of homes or communities are subject to change without notice or obligation. Illustrations are artists depictions only and may differ from completed improvements. All prices subject to change without notice. Please contact your sales associate before writing an offer.



FIRST FLOOR



THIRD FLOOR



SECOND FLOOR

