



## Priced

**\$599,500**

Elevation K

2,845 Sq Ft

2.0 Story

4 Beds

2.5 Baths

2 Car Garage

Primary Bedroom: Down

## About 208 Poplar Summit Lane

- Primary suite on the first floor with tray ceiling & crown molding; primary bath with access to walk-in closet with wood shelving and sweater tower, framed mirrors, dual sinks with quartz countertops in "Niagara", Seattle Snow shaker cabinets, garden soaking tub and separate tile shower, and tile flooring.
- Great room with gas log fireplace with decorative mantle and granite surround in "Absolute Black".
- Carolina room off of breakfast area with access to covered porch and grill patio.
- Elegant formal Dining Room painted in Sherwin Williams "Ripe Olive" with cased openings, coffered

...Read More Online

## About The Community.

Award-winning Glenmere is the quintessential combination of location and style with impressive amenities such as a walk-in Jr. Olympic-sized pool, cabana with fireplace, open play area, tot lot, and future walking trails tying in with Wake County Greenway System.

Glenmere brings that small-town charm together with everyday conveniences including shopping and a variety of restaurants in fast-growing Knightdale. The community is ideally situated with quick access to major highways, world-class healthcare, top-rated universities, and a quick ride to downtown Raleigh!

...Read More Online

Prices, plans, dimensions, features, specifications, materials, and availability of homes or communities are subject to change without notice or obligation. Illustrations are artists depictions only and may differ from completed improvements. All prices subject to change without notice. Please contact your sales associate before writing an offer.

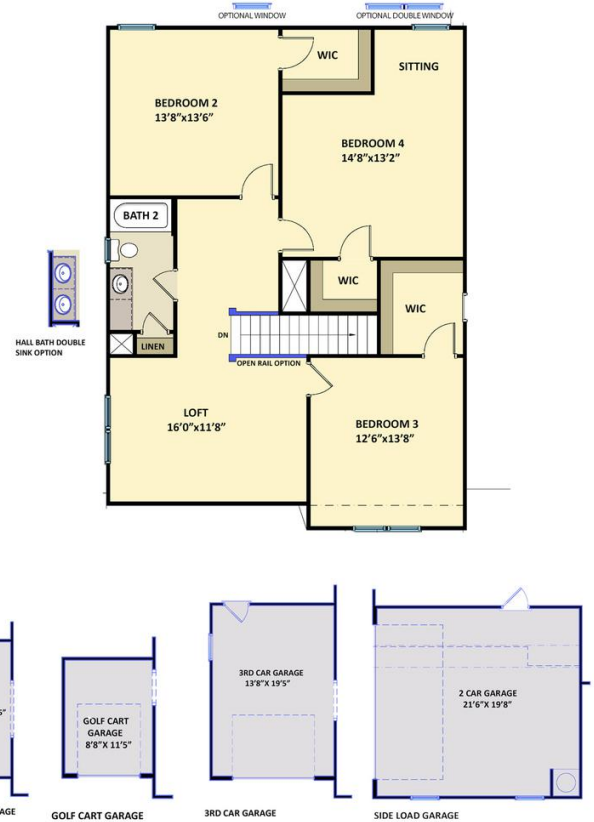
ARCHIVED 5/17/2022

**The Granville**  
CC2680

**FIRST FLOOR**



**SECOND FLOOR**



Prices, plans, dimensions, features, specifications, materials, and availability of homes or communities are subject to change without notice or obligation. Illustrations are artists depictions only and may differ from completed improvements. All prices subject to change without notice. Please contact your sales associate before writing an offer.

