



212 Poplar Summit Lane  
Knightdale, NC 27545

**GLENMERE GARDENS - ROANOKE**

CONTACT OUR NEW HOME SPECIALISTS

**MAGGIE & JESSICA**

Call Us @ 910-405-8311

info@cavinessandcates.com



**Priced**

**\$665,000**

Elevation K

3,156 Sq Ft

2.0 Story

5 Beds

3.0 Baths

2 Car Garage

Primary Bedroom: Up

## About 212 Poplar Summit Lane

- Great Room with gas log fireplace with decorative mantle and granite surround in "Absolute Black", and built-in shelving.
- Two-piece crown molding throughout first-floor main living areas.
- Elegant formal dining room painted in Sherwin Williams "Distance" with cased openings, stunning coffered ceiling, and wainscoting detail.
- The gourmet kitchen features granite countertops in "Luna Pearl", "Desert Gray" subway tile backsplash set in a brick pattern, Seattle Snow shaker cabinets, sink overlooking the great room,

...Read More Online

## About The Community.

**Award-winning Glenmere is the quintessential combination of location and style with impressive amenities such as a walk-in Jr. Olympic-sized pool, cabana with fireplace, open play area, tot lot, and future walking trails tying in with Wake County Greenway System.**

Glenmere brings that small-town charm together with everyday conveniences including shopping and a variety of restaurants in fast-growing Knightdale. The community is ideally situated with quick access to major highways, world-class healthcare, top-rated universities, and a quick ride to downtown Raleigh!

...Read More Online

Prices, plans, dimensions, features, specifications, materials, and availability of homes or communities are subject to change without notice or obligation. Illustrations are artists depictions only and may differ from completed improvements. All prices subject to change without notice. Please contact your sales associate before writing an offer.



ARCHIVED 8/16/2023

**The Roanoke**  
CC3156

**FIRST FLOOR**

**SECOND FLOOR**

REAR COVERED PORCH OPTION



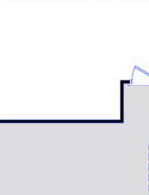
OPTIONAL 6/0 SLIDING DOOR



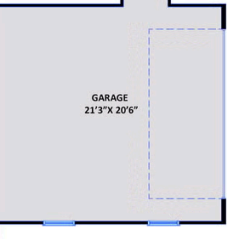
OPTIONAL 5/4 ATRIUM DOOR



GOURMET KITCHEN OPTION



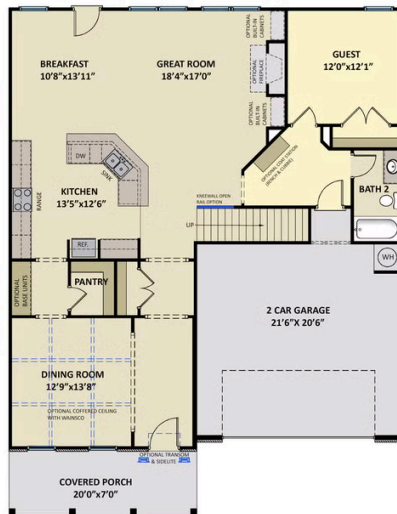
SIDE LOAD GARAGE OPTION



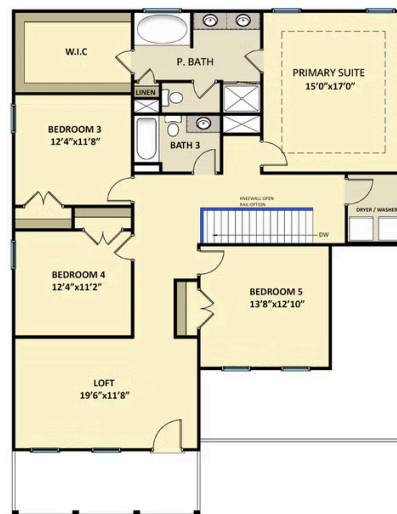
WINDOW  
OPTION

WINDOW  
OPTION

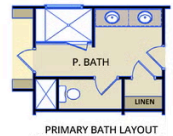
WINDOW  
OPTION



OPTIONAL  
STEEL DOOR



PRIMARY BATH LAYOUT  
OPTION 1



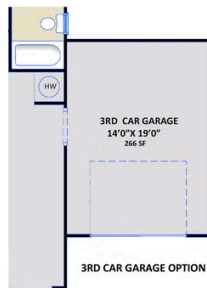
PRIMARY BATH LAYOUT  
OPTION 2



GOLF CART OPTION

WORK AREA  
6'0" x 19'0"  
114 SF

WORK AREA OPTION



3RD CAR GARAGE  
14'0" x 19'0"  
266 SF

3RD CAR GARAGE OPTION



TWO DOOR GARAGE