



## Priced

# \$632,500

Elevation KS

2,927 Sq Ft

2.0 Story

4 Beds

3.5 Baths

2 Car Garage

Primary Bedroom: Down

## About 306 Poplar Summit Lane

- First-floor primary suite with tray ceiling and crown molding, walk-in closet with wood shelving and sweater tower, dual sinks with quartz countertops in "Niagara", white shaker cabinets with center drawer stack, framed mirrors, garden tub with tile surround, tile shower, linen closet, private water closet, and tile flooring.
- Great room with gas log fireplace with decorative mantle and granite surround in "Absolute Black" with built-in shelving on both sides of the fireplace; Access to covered porch with grill patio.
- Gourmet kitchen features island with sink overlooking the great room, granite countertops in "Santa

...Read More Online

## About The Community.

Award-winning Glenmere is the quintessential combination of location and style with impressive amenities such as a walk-in Jr. Olympic-sized pool, cabana with fireplace, open play area, tot lot, and future walking trails tying in with Wake County Greenway System.

Glenmere brings that small-town charm together with everyday conveniences including shopping and a variety of restaurants in fast-growing Knightdale. The community is ideally situated with quick access to major highways, world-class healthcare, top-rated universities, and a quick ride to downtown Raleigh!

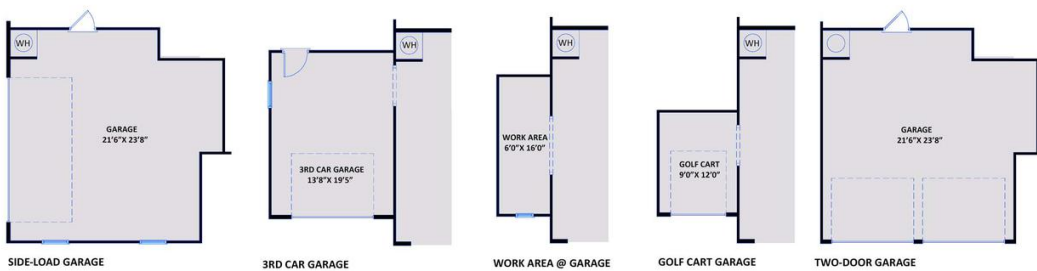
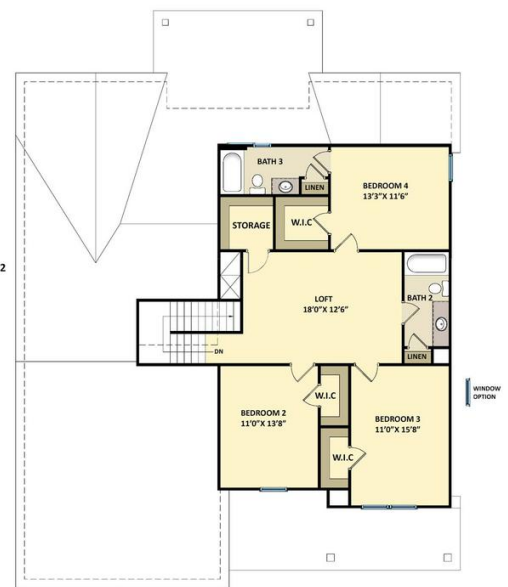
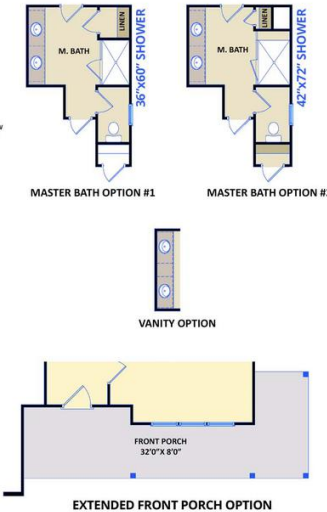
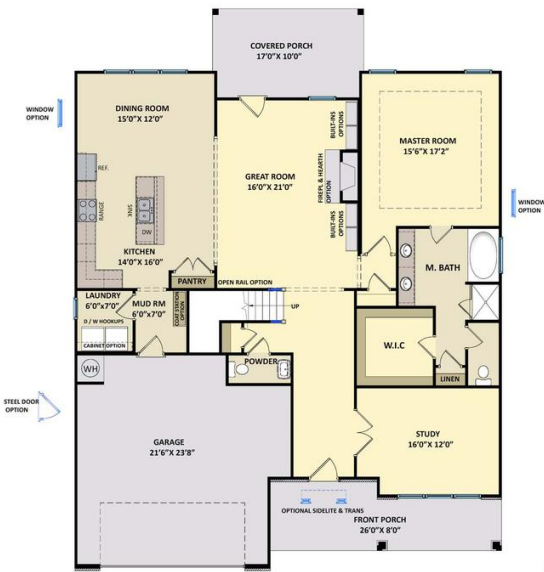
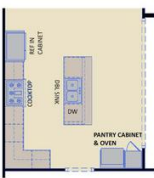
...Read More Online

Prices, plans, dimensions, features, specifications, materials, and availability of homes or communities are subject to change without notice or obligation. Illustrations are artists depictions only and may differ from completed improvements. All prices subject to change without notice. Please contact your sales associate before writing an offer.

**The Page**  
CC2927

**FIRST FLOOR**

**SECOND FLOOR**



Prices, plans, dimensions, features, specifications, materials, and availability of homes or communities are subject to change without notice or obligation. Illustrations are artists depictions only and may differ from completed improvements. All prices subject to change without notice. Please contact your sales associate before writing an offer.

