



Priced

\$665,000

Elevation B

3,156 Sq Ft

2.0 Story

5 Beds

3.0 Baths

2 Car Garage

Master Bedroom: Up

About 310 Poplar Summit Lane

- Great Room with gas log fireplace with decorative mantle and granite surround in "Absolute Black", and built-in shelving.
- Elegant formal dining room painted in Sherwin Williams "Cadet" with coffered ceiling and wainscoting detail.
- Gourmet kitchen features sink overlooking great room with bar seating, "New Caledonia" granite countertops, subway tile backsplash in "Arctic White" set in a brick pattern, white shaker cabinets, spacious butler's pantry with lower cabinets, walk-in pantry with wood shelving,; Stainless steel

...Read More Online

About The Community.

Award-winning Glenmere is the quintessential combination of location and style with impressive amenities such as a walk-in Jr. Olympic-sized pool, cabana with fireplace, open play area, tot lot, and future walking trails tying in with Wake County Greenway System.

Glenmere brings that small-town charm together with everyday conveniences including shopping and a variety of restaurants in fast-growing Knightdale. The community is ideally situated with quick access to major highways, world-class healthcare, top-rated universities, and a quick ride to downtown Raleigh!

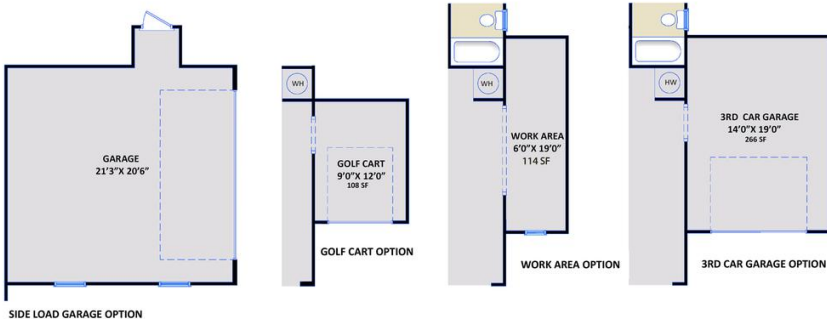
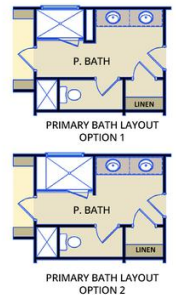
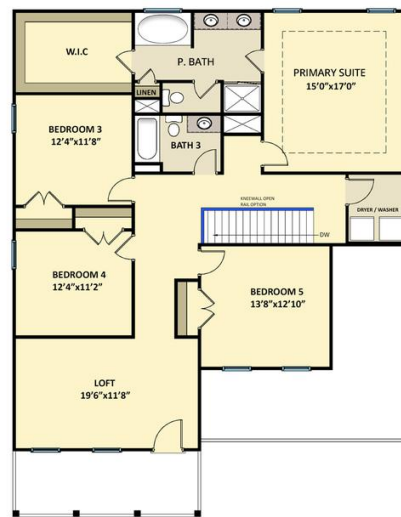
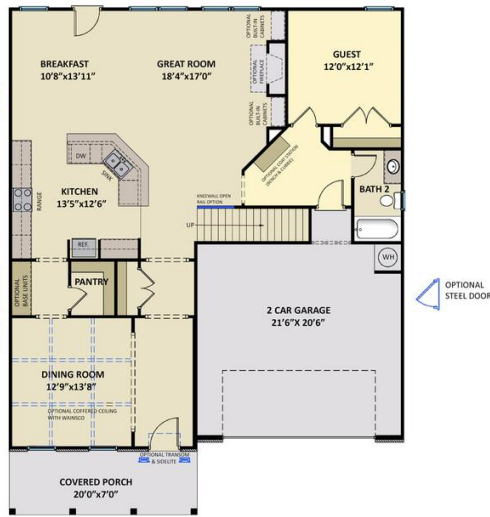
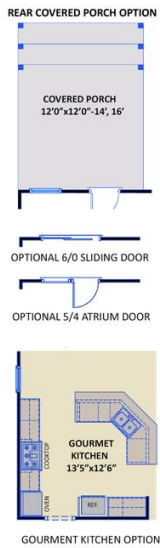
...Read More Online

Prices, plans, dimensions, features, specifications, materials, and availability of homes or communities are subject to change without notice or obligation. Illustrations are artists depictions only and may differ from completed improvements. All prices subject to change without notice. Please contact your sales associate before writing an offer.

The Roanoke
 CC3156

FIRST FLOOR

SECOND FLOOR



SIDE LOAD GARAGE OPTION

Prices, plans, dimensions, features, specifications, materials, and availability of homes or communities are subject to change without notice or obligation. Illustrations are artists depictions only and may differ from completed improvements. All prices subject to change without notice. Please contact your sales associate before writing an offer.

