



314 Poplar Summit Lane
Knightdale, NC 27545

GLENMERE GARDENS - REDWOOD

CONTACT OUR NEW HOME SPECIALISTS

MAGGIE & JESSICA

Call Us @ 910-405-8311

info@cavinessandcates.com



Priced

\$575,000

Elevation K

2,672 Sq Ft

1.5 Story

3 Beds

3.0 Baths

2 Car Garage

Primary Bedroom: Down

About 314 Poplar Summit Lane

- Spacious great room with gas log fireplace with decorative mantle and granite surround in "Absolute Black".
- Covered porch and grill patio creates the perfect outdoor living space and is easily accessible through the great room.
- Elegant formal dining room in Sherwin Williams "Passive" with coffered ceiling, and picture frame

...Read More Online

About The Community.

Award-winning Glenmere is the quintessential combination of location and style with impressive amenities such as a walk-in Jr. Olympic-sized pool, cabana with fireplace, open play area, tot lot, and future walking trails tying in with Wake County Greenway System.

Glenmere brings that small-town charm together with everyday conveniences including shopping and a variety of restaurants in fast-growing Knightdale. The community is ideally situated with quick access to major highways, world-class healthcare, top-rated universities, and a quick ride to downtown Raleigh!

...Read More Online

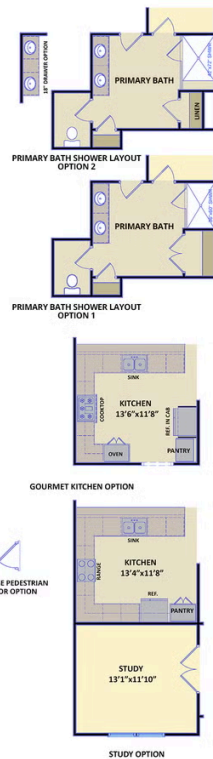
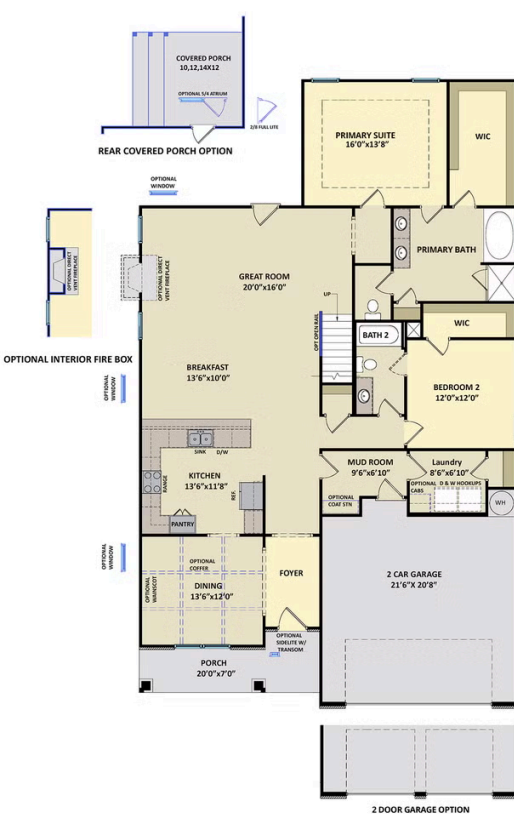
Prices, plans, dimensions, features, specifications, materials, and availability of homes or communities are subject to change without notice or obligation. Illustrations are artists depictions only and may differ from completed improvements. All prices subject to change without notice. Please contact your sales associate before writing an offer.



ARCHIVED 1/04/2024

The Redwood
CC2672

FIRST FLOOR



SECOND FLOOR

