



Elevation TW - ARCHIVED 2/16/22

2,927 Sq Ft

2.0 Story

4 Beds

3.5 Baths

2 Car Garage

Primary Bedroom: Down

About 408 Ingram Ridge Court

- First-floor primary suite with tray ceiling, walk-in closet, dual sinks, drawer stack in vanity, linen closet, private water closet, and garden tub and separate shower.
- Great room with fireplace and stunning built-ins on either side. Access to covered porch or patio
- Kitchen open to great room with island and pantry; connected to dining room with views to the backyard; Gourmet appliance layout with pantry cabinet.
- Mudroom in garage entry with built-in bench coat station; access to laundry room with washer/dryer connections.

[...Read More Online](#)

About The Community.

Award-winning Glenmere is the quintessential combination of location and style with impressive amenities such as a walk-in Jr. Olympic-sized pool, cabana with fireplace, open play area, tot lot, and future walking trails tying in with Wake County Greenway System.

Glenmere brings that small-town charm together with everyday conveniences including shopping and a variety of restaurants in fast-growing Knightdale. The community is ideally situated with quick access to major highways, world-class healthcare, top-rated universities, and a quick ride to downtown Raleigh!

[...Read More Online](#)

Prices, plans, dimensions, features, specifications, materials, and availability of homes or communities are subject to change without notice or obligation. Illustrations are artists depictions only and may differ from completed improvements. All prices subject to change without notice. Please contact your sales associate before writing an offer.

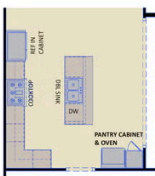
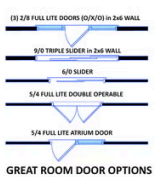
ARCHIVED 1-7-2022

The Page

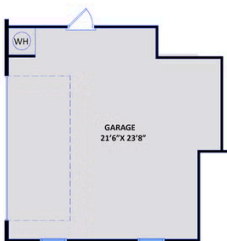
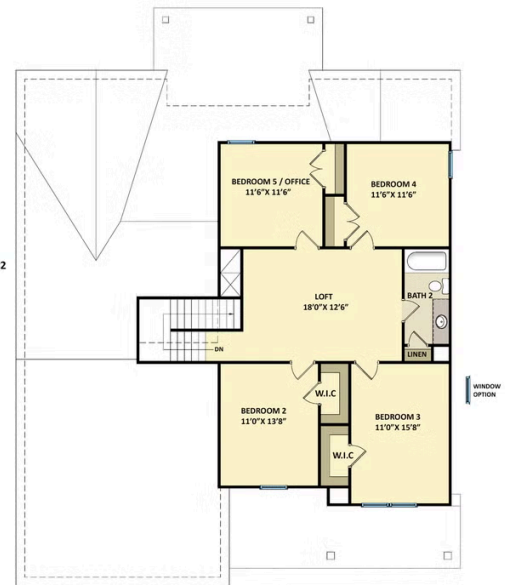
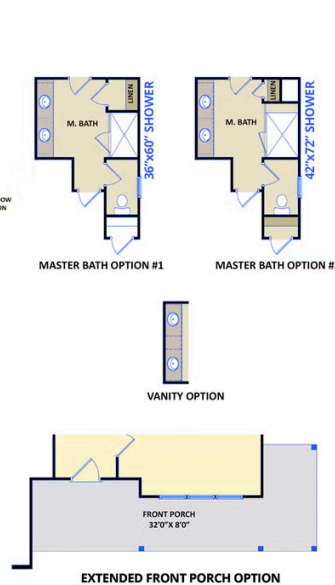
CC2927

FIRST FLOOR

SECOND FLOOR



GOURMET KITCHEN



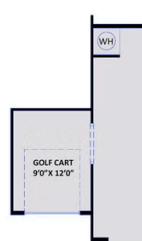
SIDE-LOAD GARAGE



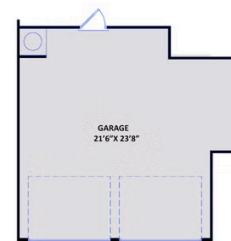
3RD CAR GARAGE



WORK AREA @ GARAGE



GOLF CART GARAGE



TWO-DOOR GARAGE



DOUBLE SINK OPTION



BEDROOM #4 BATH OPTION