



528 Ingram Ridge Court
Knightdale, NC 27545

GLENMERE GARDENS - BENTON

CONTACT OUR NEW HOME SPECIALISTS

MAGGIE & JESSICA

Call Us @ 910-405-8311

info@cavinessandcates.com



Elevation KS - ARCHIVED 10/17/2022

3,060 Sq Ft

2.5 Story

5 Beds

4.5 Baths

2 Car Garage

Primary Bedroom: Up

About 528 Ingram Ridge Court

- In-law suite on the first floor features a tray ceiling and crown molding, walk-in closet, his and hers sinks with cultured marble vanity, walk-in shower, tile flooring, linen closet, and private water closet
- Great room showcases a gas log fireplace
- Covered deck and grill deck create the perfect outdoor space
- Kitchen features granite countertops, white shaker cabinets, subway tile backsplash, stainless steel microwave, dishwasher, gas range, satin nickel finishes, pantry with wood shelving, bar top seating, and sink overlooking the great room!

[...Read More Online](#)

About The Community.

Award-winning Glenmere is the quintessential combination of location and style with impressive amenities such as a walk-in Jr. Olympic-sized pool, cabana with fireplace, open play area, tot lot, and future walking trails tying in with Wake County Greenway System.

Glenmere brings that small-town charm together with everyday conveniences including shopping and a variety of restaurants in fast-growing Knightdale. The community is ideally situated with quick access to major highways, world-class healthcare, top-rated universities, and a quick ride to downtown Raleigh!

[...Read More Online](#)

Prices, plans, dimensions, features, specifications, materials, and availability of homes or communities are subject to change without notice or obligation. Illustrations are artists depictions only and may differ from completed improvements. All prices subject to change without notice. Please contact your sales associate before writing an offer.



ARCHIVED 11/08/2023

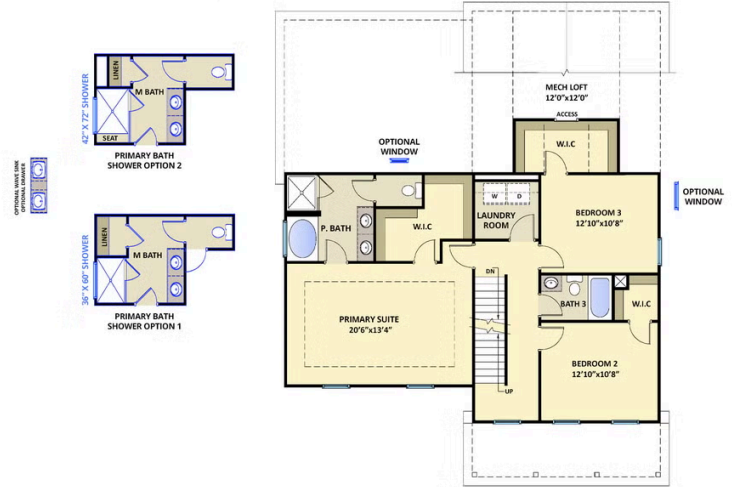
The Benton

CC3060

FIRST FLOOR



SECOND FLOOR



THIRD FLOOR

