



536 Ingram Ridge Court  
Knightdale, NC 27545  
GLENMERE GARDENS - ROANOKE

CONTACT OUR NEW HOME SPECIALISTS  
**MAGGIE & JESSICA**  
Call Us @ 910-405-8311  
info@cavinessandcates.com



## Priced

# \$534,750

Elevation KS

3,156 Sq Ft

2.0 Story

5 Beds

3.0 Baths

2 Car Garage

Master Bedroom: Up

## About 536 Ingram Ridge Court

- Great Room with gas log fireplace and built-in shelving
- Elegant formal dining room with stunning coffered ceiling and wainscoting detail
- Two-piece crown molding throughout main living space
- Kitchen features granite countertops, arctic white subway tile backsplash, white shaker cabinets, stainless steel microwave, dishwasher, and gas range, satin nickel finishes, sink overlooking the great room, breakfast area, spacious butler's pantry, and pantry with wood shelves
- Guest room on 1st floor with access to hall bath with tub/shower combination and tile flooring

...Read More Online

## About The Community.

Award-winning Glenmere is the quintessential combination of location and style with impressive amenities such as a walk-in Jr. Olympic-sized pool, cabana with fireplace, open play area, tot lot, and future walking trails tying in with Wake County Greenway System. Glenmere brings that small-town charm together with everyday conveniences including shopping and a variety of restaurants in fast-growing Knightdale. The community is ideally situated with quick access to major highways, world-class healthcare, top-rated universities, and a quick ride to downtown Raleigh!

...Read More Online

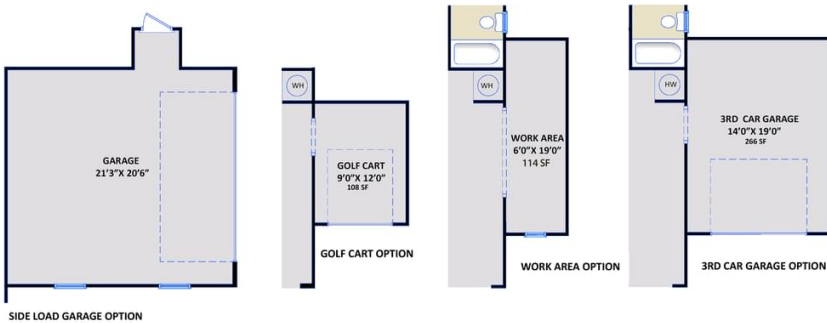
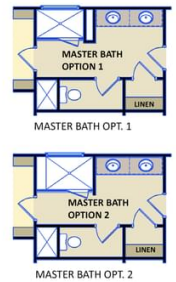
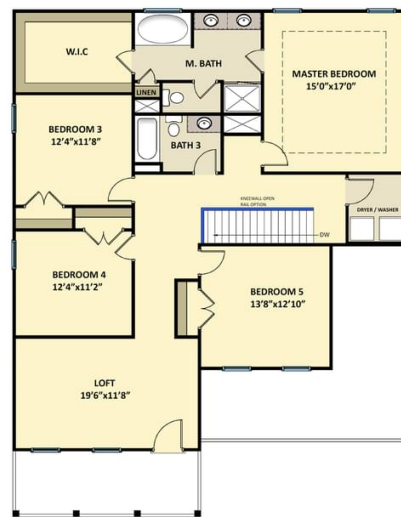
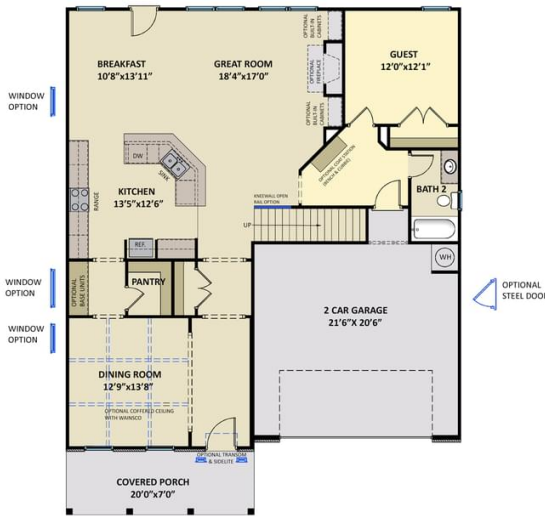
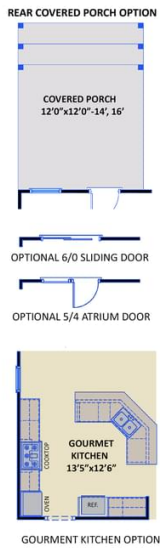
Prices, plans, dimensions, features, specifications, materials, and availability of homes or communities are subject to change without notice or obligation. Illustrations are artists depictions only and may differ from completed improvements. All prices subject to change without notice. Please contact your sales associate before writing an offer.



**The Roanoke**  
CC3156

**FIRST FLOOR**

**SECOND FLOOR**



SIDE LOAD GARAGE OPTION

Prices, plans, dimensions, features, specifications, materials, and availability of homes or communities are subject to change without notice or obligation. Illustrations are artists depictions only and may differ from completed improvements. All prices subject to change without notice. Please contact your sales associate before writing an offer.

