



540 Ingram Ridge Court  
Knightdale, NC 27545

**GLENMERE GARDENS - PAGE**

CONTACT OUR NEW HOME SPECIALISTS

**MAGGIE & JESSICA**

Call Us @ 910-405-8311

info@cavinessandcates.com



**Priced**

**\$499,900**

Elevation KS

2,927 Sq Ft

2.0 Story

4 Beds

3.5 Baths

2 Car Garage

Primary Bedroom: Down

## About 540 Ingram Ridge Court

- First-floor master suite with tray ceiling, walk-in closet with wood shelving and sweater tower, his and hers sinks with cultured marble vanity and white shaker cabinets, linen closet, and private water closet, garden tub and separate tiled shower
- Great room with natural gas fireplace with decorative mantle and surround flanked by stunning built-ins; Access to covered deck with grill deck overlooking the back yard
- Kitchen with white shaker cabinets, granite countertops, subway tile backsplash, stainless microwave, dishwasher and gas range, island, and pantry; connected to the dining room with views

...Read More Online

## About The Community.

**Award-winning Glenmere is the quintessential combination of location and style with impressive amenities such as a walk-in Jr. Olympic-sized pool, cabana with fireplace, open play area, tot lot, and future walking trails tying in with Wake County Greenway System.**

Glenmere brings that small-town charm together with everyday conveniences including shopping and a variety of restaurants in fast-growing Knightdale. The community is ideally situated with quick access to major highways, world-class healthcare, top-rated universities, and a quick ride to downtown Raleigh!

...Read More Online

Prices, plans, dimensions, features, specifications, materials, and availability of homes or communities are subject to change without notice or obligation. Illustrations are artists depictions only and may differ from completed improvements. All prices subject to change without notice. Please contact your sales associate before writing an offer.



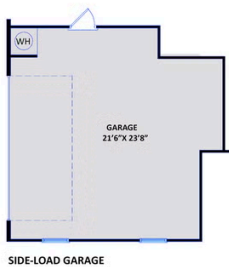
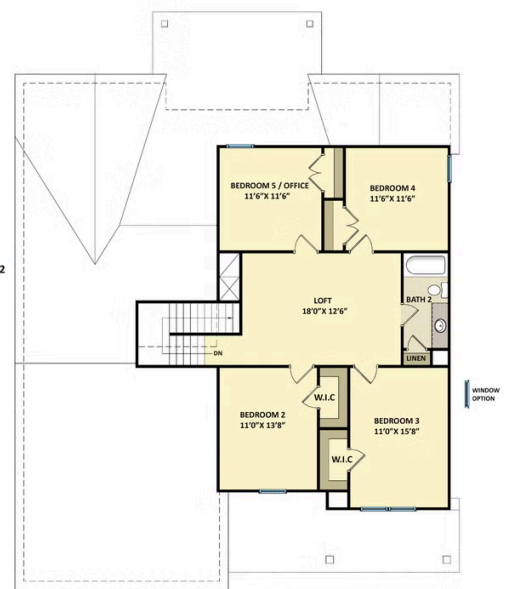
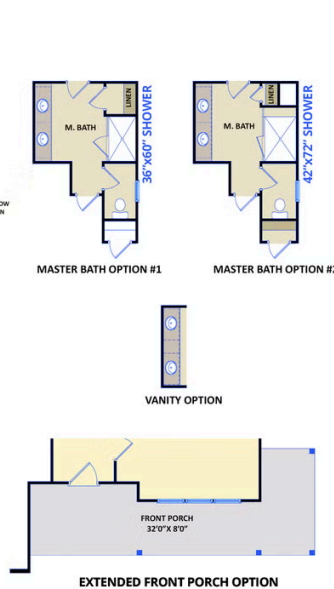
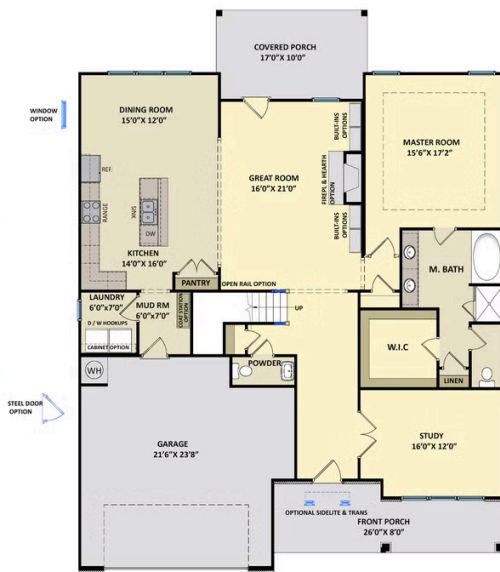
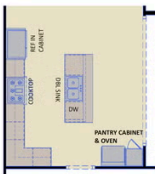
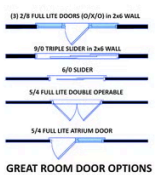
ARCHIVED 1-7-2022

## The Page

CC2927

### FIRST FLOOR

### SECOND FLOOR



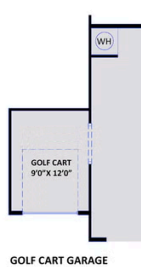
SIDE-LOAD GARAGE



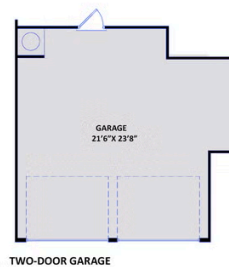
3RD CAR GARAGE



WORK AREA @ GARAGE



GOLF CART GARAGE



TWO-DOOR GARAGE



DOUBLE SINK OPTION



BEDROOM #4 BATH OPTION