



541 Ingram Ridge Court  
Knightdale, NC 27545

**GLENMERE GARDENS - ROANOKE**

CONTACT OUR NEW HOME SPECIALISTS

**MAGGIE & JESSICA**

Call Us @ 910-405-8311

info@cavinessandcates.com



**Priced**

**\$555,500**

Elevation K

3,156 Sq Ft

2.0 Story

5 Beds

3.0 Baths

2 Car Garage

Primary Bedroom: Up

## About 541 Ingram Ridge Court

- Great Room with gas log fireplace with decorative mantle and granite surround, and built-in shelving.
- Elegant formal dining room painted in Sherwin Williams "Comfort Gray" with stunning coffered ceiling and wainscoting detail.
- Two-piece crown molding throughout main living space
- Staircase with metal balusters.
- Gourmet kitchen features granite countertops in "Ashen White", "Arctic White" subway tile

...Read More Online

## About The Community.

**Award-winning Glenmere is the quintessential combination of location and style with impressive amenities such as a walk-in Jr. Olympic-sized pool, cabana with fireplace, open play area, tot lot, and future walking trails tying in with Wake County Greenway System.**

Glenmere brings that small-town charm together with everyday conveniences including shopping and a variety of restaurants in fast-growing Knightdale. The community is ideally situated with quick access to major highways, world-class healthcare, top-rated universities, and a quick ride to downtown Raleigh!

...Read More Online

Prices, plans, dimensions, features, specifications, materials, and availability of homes or communities are subject to change without notice or obligation. Illustrations are artists depictions only and may differ from completed improvements. All prices subject to change without notice. Please contact your sales associate before writing an offer.



ARCHIVED 8/16/2023

**The Roanoke**  
CC3156

**FIRST FLOOR**

**SECOND FLOOR**

REAR COVERED PORCH OPTION



OPTIONAL 6/0 SLIDING DOOR

OPTIONAL 5/4 ATRIUM DOOR

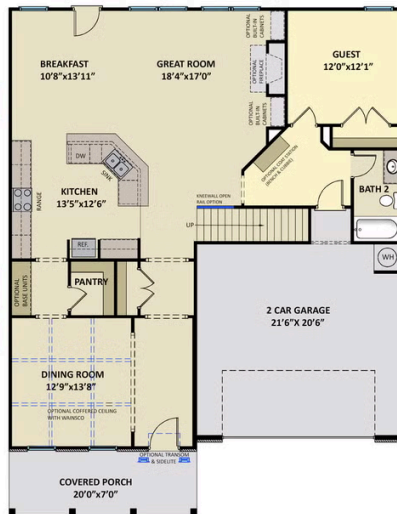


GOURMET KITCHEN OPTION

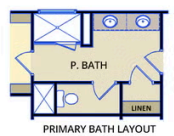
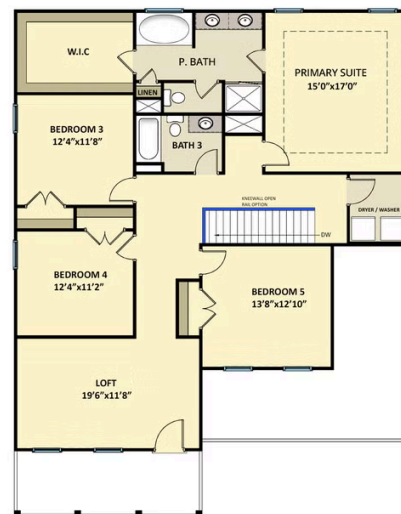
WINDOW  
OPTION

WINDOW  
OPTION

WINDOW  
OPTION



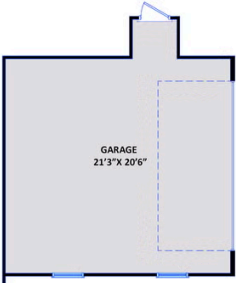
OPTIONAL  
STEEL DOOR



PRIMARY BATH LAYOUT  
OPTION 1



PRIMARY BATH LAYOUT  
OPTION 2



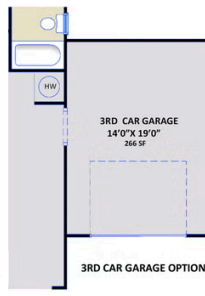
SIDE LOAD GARAGE OPTION



GOLF CART OPTION



WORK AREA OPTION



3RD CAR GARAGE OPTION



TWO DOOR GARAGE