



544 Ingram Ridge Court
Knightdale, NC 27545

GLENMERE GARDENS - BENTON

CONTACT OUR NEW HOME SPECIALISTS

MAGGIE & JESSICA

Call Us @ 910-405-8311

info@cavinessandcates.com



Priced

\$562,300

Elevation KS2

3,060 Sq Ft

2.5 Story

5 Beds

4.5 Baths

2 Car Garage

Primary Bedroom: Up

About 544 Ingram Ridge Court

- This home plan features a spacious in-law suite on the first floor with walk-in closet, tray ceiling and crown molding, tile flooring in bathroom, dual sinks with quartz countertops in "Simply White", white shaker cabinets and drawer stack, walk-in shower with tile surround, and private water closet.
- Great room with natural gas log fireplace with decorative mantle and granite surround in "Absolute Black", and access to covered deck and grill deck overlooking the backyard.
- Gourmet kitchen with white shaker cabinets, "New Caledonia" granite countertops, "Arctic White" subway tile backsplash, pantry with wood shelving, sink overlooking the great room, and bartop

...Read More Online

About The Community.

Award-winning Glenmere is the quintessential combination of location and style with impressive amenities such as a walk-in Jr. Olympic-sized pool, cabana with fireplace, open play area, tot lot, and future walking trails tying in with Wake County Greenway System.

Glenmere brings that small-town charm together with everyday conveniences including shopping and a variety of restaurants in fast-growing Knightdale. The community is ideally situated with quick access to major highways, world-class healthcare, top-rated universities, and a quick ride to downtown Raleigh!

...Read More Online

Prices, plans, dimensions, features, specifications, materials, and availability of homes or communities are subject to change without notice or obligation. Illustrations are artists depictions only and may differ from completed improvements. All prices subject to change without notice. Please contact your sales associate before writing an offer.



ARCHIVED 11/08/2023

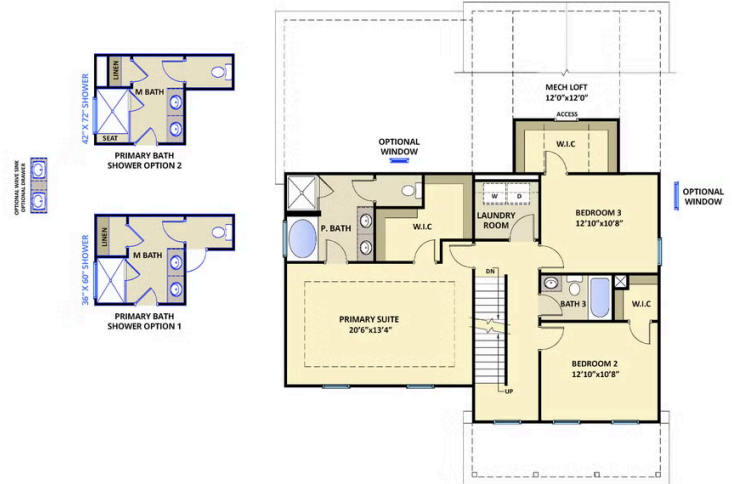
The Benton

CC3060

FIRST FLOOR



SECOND FLOOR



THIRD FLOOR

