



9025 Carly Lane
Leland, NC 28451

**EAST LAKE - CAMELLIA - EMBARK
COLLECTION**

CONTACT OUR NEW HOME SPECIALISTS

MAGGIE & JESSICA

Call Us @ 910-405-8311

info@cavinessandcates.com



Priced

\$406,500

Elevation F - Artistic Rendering for
Representation Purposes Only

2,358 Sq Ft

2.0 Story

4 Beds

2.5 Baths

2 Car Garage

Primary Bedroom: Down

About 9025 Carly Lane

- Off the foyer, a versatile flex room features a striking SW “Oyster Bay” square panel accent wall.
- The open great room flows seamlessly into the kitchen and offers access to the rear covered screened-in porch, ideal for effortless indoor-outdoor living.
- The kitchen offers "Arctic White" quartz countertops, white shaker cabinets, herringbone backsplash, bar seating, a pantry, and stainless steel appliances.
- A nearby laundry room with cabinetry and a stacked washer/dryer is conveniently located off the garage entry, next to a well-placed half bath.

...Read More Online

About The Community.

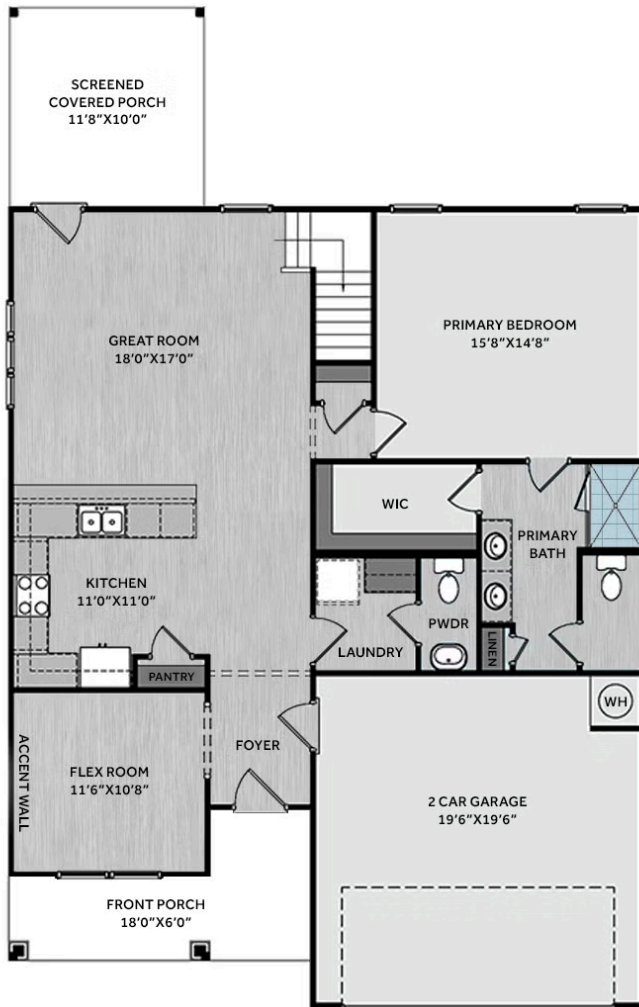
Nestled in the welcoming community of East Lake - Channel Walk in Leland, NC, Caviness & Cates brings a fresh vision to modern family living. Our thoughtfully designed homes combine timeless style, superior build quality, and innovative features that prioritize comfort and convenience for every stage of life. What sets our homes apart? Every floor plan features the primary suite conveniently located on the first floor—no more stairs for your daily retreat. Whether you're starting a family, welcoming multigenerational living, or simply craving that easy, one-level lifestyle, this signature touch delivers peace of mind and accessibility right where it matters most.

...Read More Online

Prices, plans, dimensions, features, specifications, materials, and availability of homes or communities are subject to change without notice or obligation. Illustrations are artists depictions only and may differ from completed improvements. All prices subject to change without notice. Please contact your sales associate before writing an offer.



FIRST FLOOR



SECOND FLOOR

