



1005 Woodsorrel Rd
Leland, NC 28451

GRAYSON PARK - ABERDEEN

CONTACT OUR NEW HOME SPECIALISTS

MAGGIE & JESSICA

Call Us @ 910-405-8311

info@cavinessandcates.com



Priced

\$399,900

2,234 Sq Ft

2.0 Story

3 Beds

2.5 Baths

2 Car Garage

Primary Bedroom: Up

About 1005 Woodsorrel Rd

- This home sits on a corner lot!
- Great room with gas log fireplace and decorative mantle with granite surround in "Absolute Black".
- First-floor home office with walk-in closet.
- Eat-in kitchen with island and sink overlooking the great room, granite countertops in "Azul Platino", subway tile backsplash in "Desert Gray" set in a brick pattern, white shaker cabinets, corner pantry, and breakfast area; Stainless steel microwave, dishwasher, and gas range.
- Rear covered porch with grill patio is easily accessible through the breakfast area.

...Read More Online

About The Community.

Grayson Park is a beautiful community in Leland, North Carolina within Brunswick County. Only 12 minutes to downtown Wilmington and surrounded by all the city and coast have to offer! Grayson Park offers an attractive natural setting with abundant wooded areas and ponds. Amenities include a clubhouse with a catering kitchen; a competition-size swimming pool and kiddie pool; lighted tennis courts; playground; sidewalks; and walking trails! Visit Grayson Park today and find a place to call home!

...Read More Online

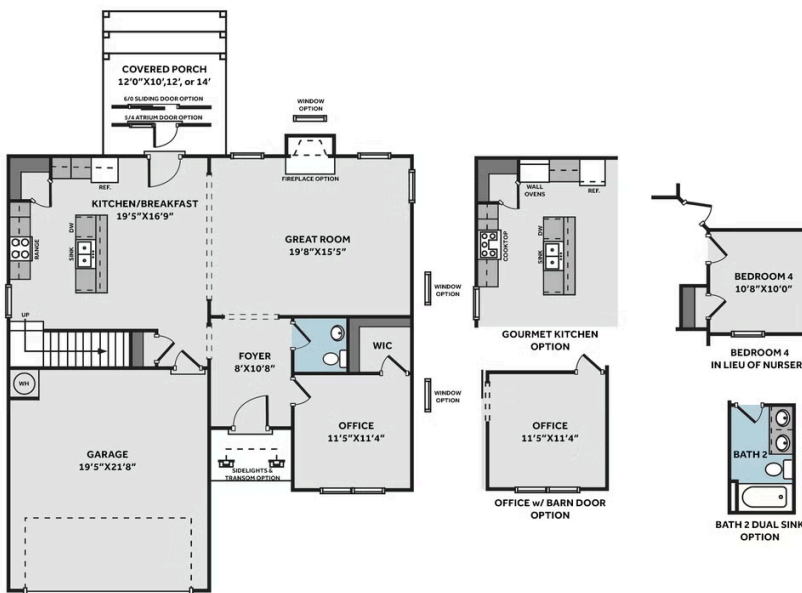
Prices, plans, dimensions, features, specifications, materials, and availability of homes or communities are subject to change without notice or obligation. Illustrations are artists depictions only and may differ from completed improvements. All prices subject to change without notice. Please contact your sales associate before writing an offer.



THE ABERDEEN

CC2234

FIRST FLOOR



SECOND FLOOR

