



2545 Longleaf Pine Circle
Leland, NC 28451
GRAYSON PARK - BRUNSWICK

CONTACT OUR NEW HOME SPECIALISTS
MAGGIE & JESSICA
Call Us @ 910-405-8311
info@cavinessandcates.com



Priced
\$300,960

Elevation K
2,355 Sq Ft
2.0 Story
4 Beds
2.5 Baths
2 Car Garage
Primary Bedroom: Up

About 2545 Longleaf Pine Circle

- The entrance of this 2 story home showcases a 2 story ceiling with hanging decorative light fixture
- Eat-in kitchen with large island features granite countertops, subway tile backsplash, white cabinets, stainless steel microwave, dishwasher, and gas range, satin nickel finishes, pantry, and window over sink with views to the backyard
- Covered porch and grill patio creates a perfect outdoor space
- Great room with gas log fireplace
- Elegant formal dining room with stunning coffered ceiling and wainscoting detail

...Read More Online

About The Community.

Grayson Park is a beautiful community in Leland, North Carolina within Brunswick County. Only 12 minutes to downtown Wilmington and surrounded by all the city and coast have to offer! Grayson Park offers an attractive natural setting with abundant wooded areas and ponds. Amenities include a clubhouse with a catering kitchen; a competition-size swimming pool and kiddie pool; lighted tennis courts; playground; sidewalks; and walking trails! Visit Grayson Park today and find a place to call home!



OPEN HOUSE!

...Read More Online

Prices, plans, dimensions, features, specifications, materials, and availability of homes or communities are subject to change without notice or obligation. Illustrations are artists depictions only and may differ from completed improvements. All prices subject to change without notice. Please contact your sales associate before writing an offer.





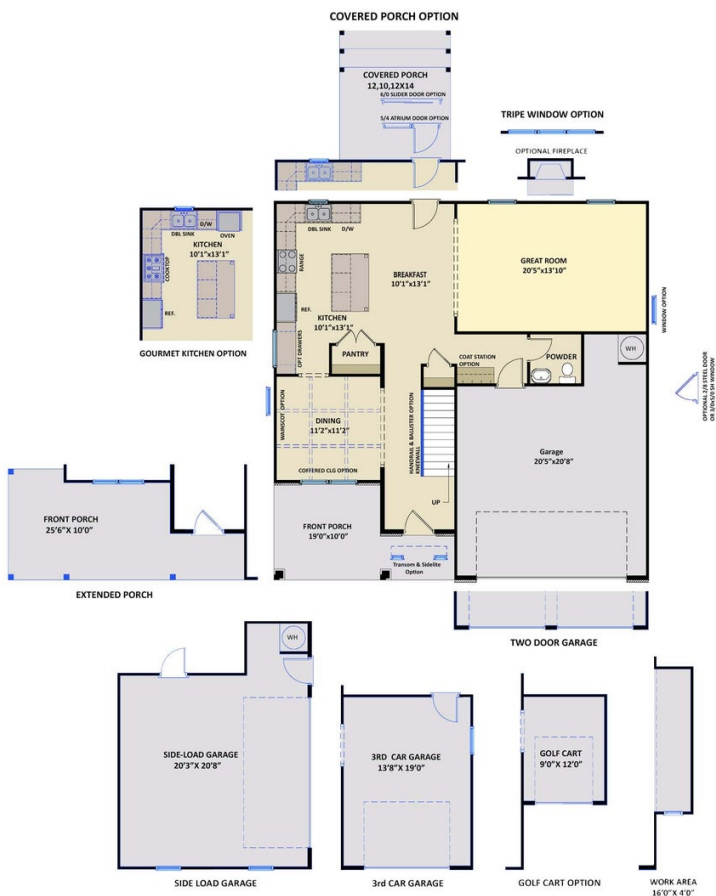
2545 Longleaf Pine Circle
Leland, NC 28451
GRAYSON PARK - BRUNSWICK

CONTACT OUR NEW HOME SPECIALISTS
MAGGIE & JESSICA
Call Us @ 910-405-8311
info@cavinessandcates.com

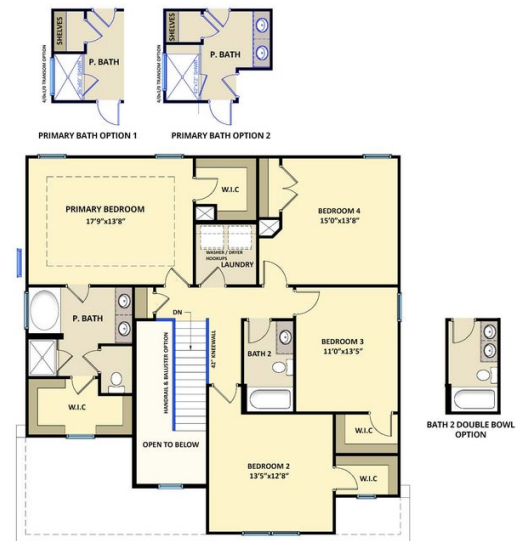
ARCHIVED 8/18/2023

The Brunswick CC2355

FIRST FLOOR



SECOND FLOOR



Prices, plans, dimensions, features, specifications, materials, and availability of homes or communities are subject to change without notice or obligation. Illustrations are artists depictions only and may differ from completed improvements. All prices subject to change without notice. Please contact your sales associate before writing an offer.

