



Priced

\$284,900

Elevation C

1,997 Sq Ft

2.0 Story

3 Beds

2.5 Baths

2 Car Garage

Primary Bedroom: Up

About 2577 Longleaf Pine Circle

- Great room with gas log fireplace
- Covered porch creates the perfect outdoor space
- Open kitchen features granite countertops, subway tile backsplash, white cabinets, stainless steel microwave, dishwasher, and gas cooktop range, satin nickel finishes, pantry, and sink with views to the backyard
- Elegant formal dining room with stunning coffered ceiling and wainscoting detail
- Half bath with tile flooring, pedestal sink, and oval mirror

...Read More Online

About The Community.

Grayson Park is a beautiful community in Leland, North Carolina within Brunswick County. Only 12 minutes to downtown Wilmington and surrounded by all the city and coast have to offer! Grayson Park offers an attractive natural setting with abundant wooded areas and ponds. Amenities include a clubhouse with a catering kitchen; a competition-size swimming pool and kiddie pool; lighted tennis courts; playground; sidewalks; and walking trails! Visit Grayson Park today and find a place to call home!

...Read More Online

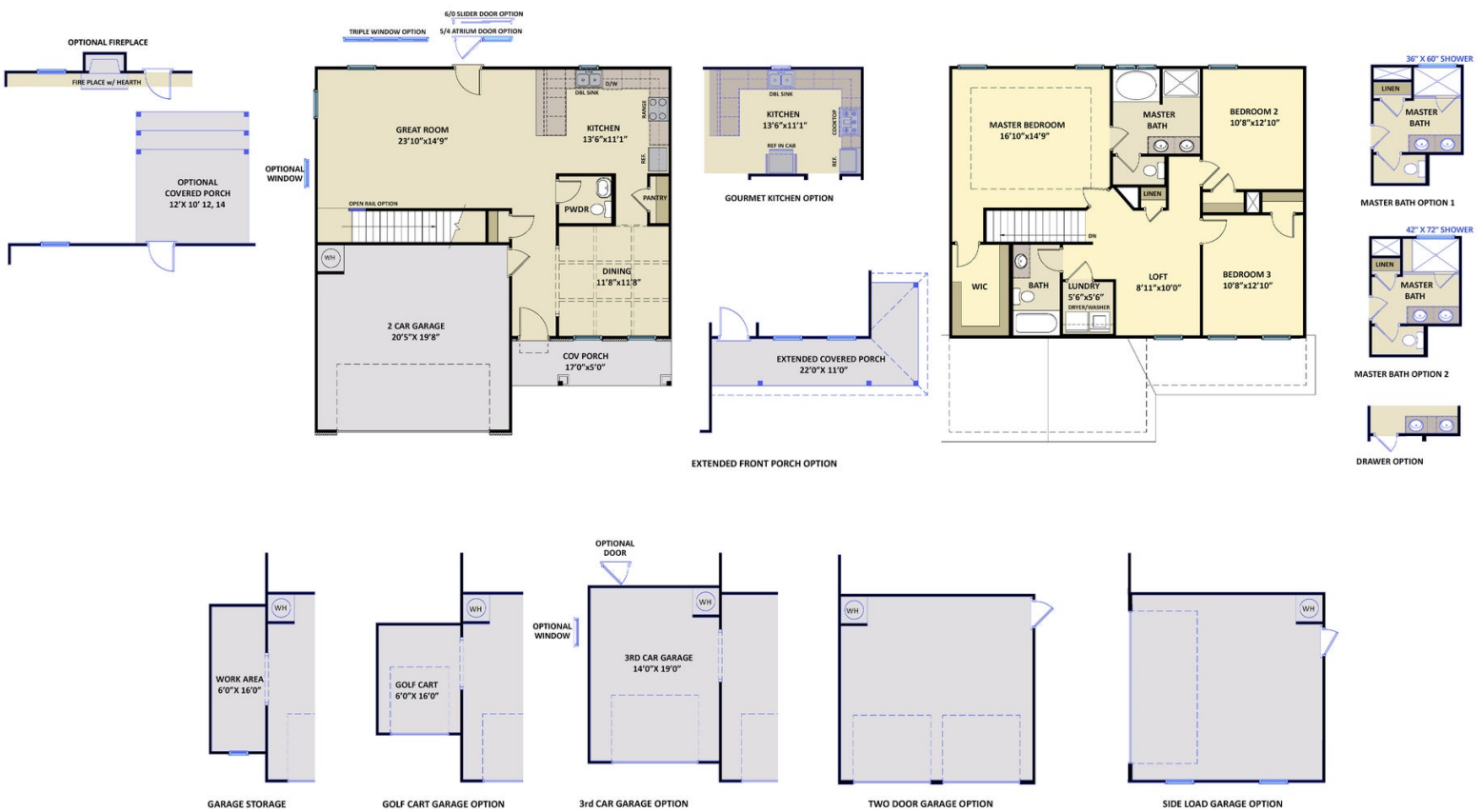
Prices, plans, dimensions, features, specifications, materials, and availability of homes or communities are subject to change without notice or obligation. Illustrations are artists depictions only and may differ from completed improvements. All prices subject to change without notice. Please contact your sales associate before writing an offer.

ARCHIVED

The Meadowbrook
CC1997

FIRST FLOOR

SECOND FLOOR



Prices, plans, dimensions, features, specifications, materials, and availability of homes or communities are subject to change without notice or obligation. Illustrations are artists depictions only and may differ from completed improvements. All prices subject to change without notice. Please contact your sales associate before writing an offer.

