



2645 Longleaf Pine Circle
Leland, NC 28451
GRAYSON PARK - BAILEY

CONTACT OUR NEW HOME SPECIALISTS
MAGGIE & JESSICA
Call Us @ 910-405-8311
info@cavinessandcates.com



Priced

\$309,446

Elevation K
2,424 Sq Ft
2.5 Story
4 Beds
2.5 Baths
2 Car Garage
Master Bedroom: Up

About 2645 Longleaf Pine Circle

- Great room with gas log fireplace
- Kitchen features dining area, granite countertops, subway tile backsplash, white cabinets, stainless steel microwave, dishwasher, and gas cooktop range, satin nickel finishes, storage closet, and island with sink
- Covered rear porch is perfect for entertaining
- Half bath with pedestal sink and tile flooring
- All bedrooms on second floor convenient to laundry room with tile flooring and hall bath with tile

...Read More Online

About The Community.

Grayson Park is a beautiful community in Leland, North Carolina within Brunswick County. Only 12 minutes to downtown Wilmington and surrounded by all the city and coast have to offer! Grayson Park offers an attractive natural setting with abundant wooded areas and ponds. Amenities include a clubhouse with a catering kitchen; a competition-size swimming pool and kiddie pool; lighted tennis courts; playground; sidewalks; and walking trails! Visit Grayson Park today and find a place to call home!

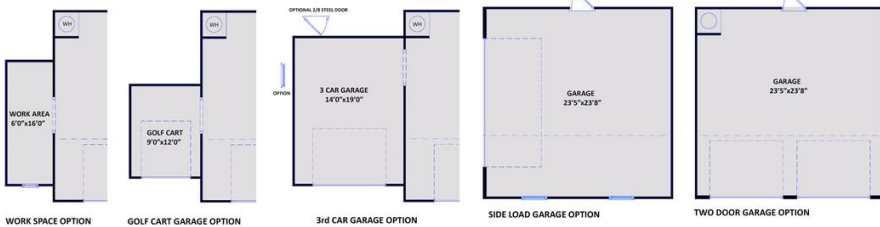
...Read More Online

Prices, plans, dimensions, features, specifications, materials, and availability of homes or communities are subject to change without notice or obligation. Illustrations are artists depictions only and may differ from completed improvements. All prices subject to change without notice. Please contact your sales associate before writing an offer.



The Bailey
CC2136

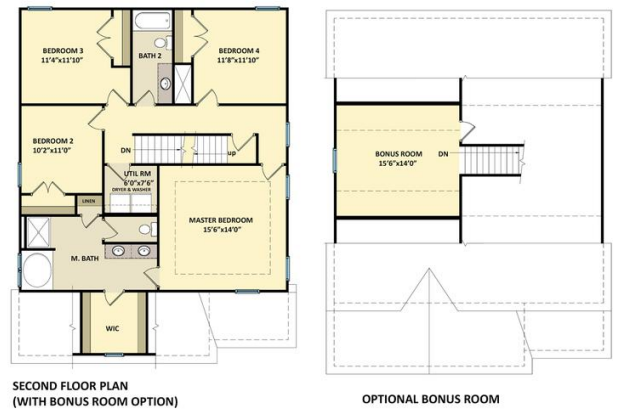
FIRST FLOOR



SECOND FLOOR



SECOND FLOOR WITH BONUS ROOM



Prices, plans, dimensions, features, specifications, materials, and availability of homes or communities are subject to change without notice or obligation. Illustrations are artists depictions only and may differ from completed improvements. All prices subject to change without notice. Please contact your sales associate before writing an offer.

