



Priced

\$384,000

Elevation F

1,997 Sq Ft

2.0 Story

3 Beds

2.5 Baths

2 Car Garage

Master Bedroom: Up

About 2678 Longleaf Pine Circle

- Great room with gas log fireplace with decorative mantle and granite surround in "Absolute Black".
- Covered porch creates the perfect outdoor space and is easily accessible through the great room.
- Kitchen open to great room with bar seating, granite countertops in "Luna Pearl", "Arctic White" subway tile backsplash set in a brick pattern, white shaker cabinets, pantry, and sink with views to the backyard; stainless steel microwave, dishwasher, and gas range.

...Read More Online

About The Community.

Grayson Park is a beautiful community in Leland, North Carolina within Brunswick County. Only 12 minutes to downtown Wilmington and surrounded by all the city and coast have to offer! Grayson Park offers an attractive natural setting with abundant wooded areas and ponds. Amenities include a clubhouse with a catering kitchen; a competition-size swimming pool and kiddie pool; lighted tennis courts; playground; sidewalks; and walking trails! Visit Grayson Park today and find a place to call home!

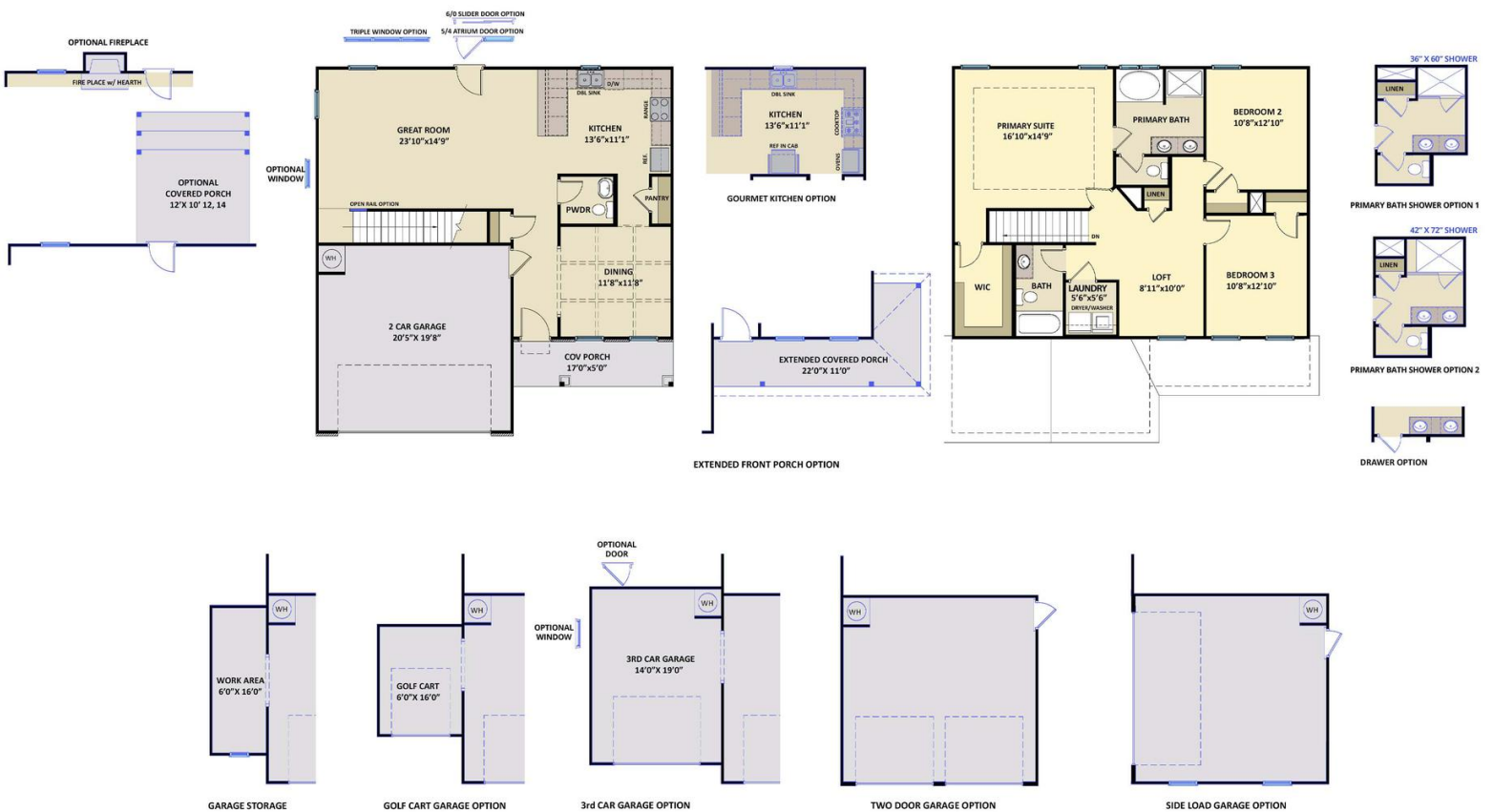
...Read More Online

Prices, plans, dimensions, features, specifications, materials, and availability of homes or communities are subject to change without notice or obligation. Illustrations are artists depictions only and may differ from completed improvements. All prices subject to change without notice. Please contact your sales associate before writing an offer.

The Meadowbrook
CC1997

FIRST FLOOR

SECOND FLOOR



Prices, plans, dimensions, features, specifications, materials, and availability of homes or communities are subject to change without notice or obligation. Illustrations are artists depictions only and may differ from completed improvements. All prices subject to change without notice. Please contact your sales associate before writing an offer.

