



2682 Longleaf Pine Circle
Leland, NC 28451

GRAYSON PARK - ABERDEEN

CONTACT OUR NEW HOME SPECIALISTS

MAGGIE & JESSICA

Call Us @ 910-405-8311

info@cavinessandcates.com



Priced

\$409,900

2,234 Sq Ft

2.0 Story

3 Beds

2.5 Baths

2 Car Garage

Primary Bedroom: Up

About 2682 Longleaf Pine Circle

- Great room with gas log fireplace and decorative mantle with granite surround in "Absolute Black".
- First-floor home office with walk-in closet.
- Eat-in kitchen with island and sink overlooking the great room, granite countertops in "Santa Cecilia Light", subway tile backsplash in "Arctic White" set in a brick pattern, white shaker cabinets, corner pantry, and breakfast area; Stainless steel microwave, dishwasher, and gas range.
- Covered porch is easily accessible through the breakfast area.
- Half-bath with pedestal sink, oval mirror, and tile flooring.

...Read More Online

About The Community.

Grayson Park is a beautiful community in Leland, North Carolina within Brunswick County. Only 12 minutes to downtown Wilmington and surrounded by all the city and coast have to offer! Grayson Park offers an attractive natural setting with abundant wooded areas and ponds. Amenities include a clubhouse with a catering kitchen; a competition-size swimming pool and kiddie pool; lighted tennis courts; playground; sidewalks; and walking trails! Visit Grayson Park today and find a place to call home!

...Read More Online

Prices, plans, dimensions, features, specifications, materials, and availability of homes or communities are subject to change without notice or obligation. Illustrations are artists depictions only and may differ from completed improvements. All prices subject to change without notice. Please contact your sales associate before writing an offer.



ARCHIVED 1/05/2024

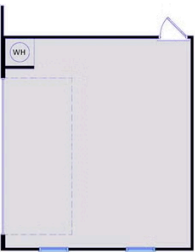
The Aberdeen

CC2234

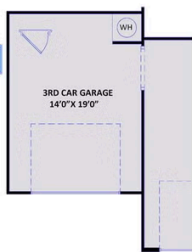
FIRST FLOOR



SECOND FLOOR



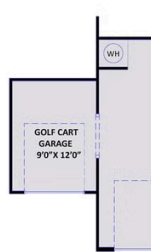
SIDE LOAD GARAGE



3RD CAR GARAGE



WORK SPACE GARAGE



GOLF CART GARAGE