



2685 Longleaf Pine Circle
Leland, NC 28451

GRAYSON PARK - DRAYTON

CONTACT OUR NEW HOME SPECIALISTS

MAGGIE & JESSICA

Call Us @ 910-405-8311

info@cavinessandcates.com



Priced

\$428,474

Elevation E - ARCHIVED 3/29/23

2,325 Sq Ft

2.0 Story

4 Beds

2.5 Baths

2 Car Garage

Primary Bedroom: Up

About 2685 Longleaf Pine Circle

- First-floor with formal dining room painted in Sherwin Williams "Cityscape" with picture frame wainscoting detail and coffered ceiling.
- Kitchen with island is open to breakfast area and great room, granite countertops in "Luna Pearl", subway tile backsplash in "Desert Gray" set in a brick pattern, white shaker cabinets, corner pantry, and sink with views to the backyard; Stainless steel microwave, dishwasher, and gas range.

[...Read More Online](#)

About The Community.

Grayson Park is a beautiful community in Leland, North Carolina within Brunswick County. Only 12 minutes to downtown Wilmington and surrounded by all the city and coast have to offer! Grayson Park offers an attractive natural setting with abundant wooded areas and ponds. Amenities include a clubhouse with a catering kitchen; a competition-size swimming pool and kiddie pool; lighted tennis courts; playground; sidewalks; and walking trails! Visit Grayson Park today and find a place to call home!

[...Read More Online](#)

Prices, plans, dimensions, features, specifications, materials, and availability of homes or communities are subject to change without notice or obligation. Illustrations are artists depictions only and may differ from completed improvements. All prices subject to change without notice. Please contact your sales associate before writing an offer.

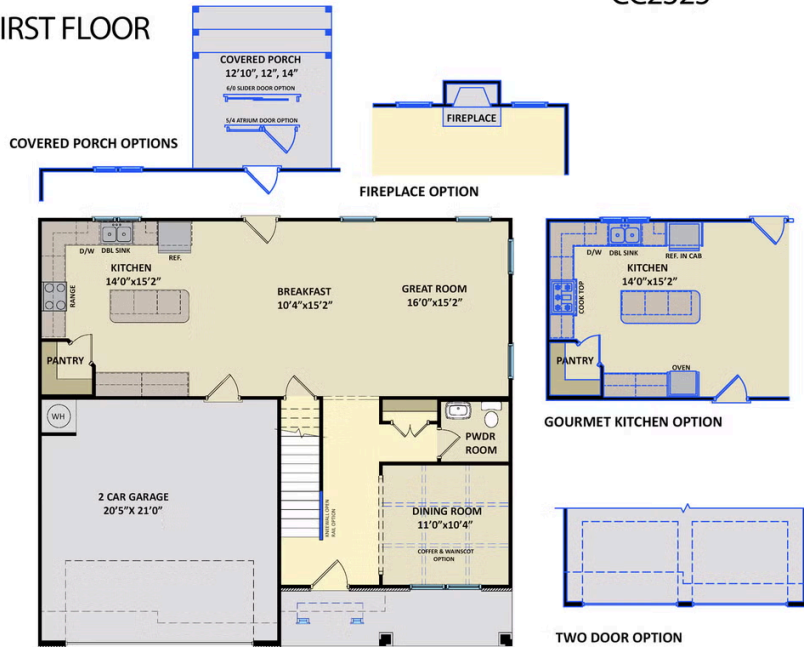


ARCHIVED 8/22/2023

The Drayton

CC2325

FIRST FLOOR



SECOND FLOOR

