



2729 Longleaf Pine Circle
Leland, NC 28451

GRAYSON PARK - GRANVILLE

CONTACT OUR NEW HOME SPECIALISTS

MAGGIE & JESSICA

Call Us @ 910-405-8311

info@cavinessandcates.com



Priced

\$479,000

2,724 Sq Ft

2.0 Story

4 Beds

2.5 Baths

2 Car Garage

Primary Bedroom: Down

About 2729 Longleaf Pine Circle

- Great room with gas log fireplace with floating mantle stained in "Loft Pine".
- Formal dining room painted in Sherwin Williams "Cityscape" with two-piece crown molding and picture frame wainscoting detail.
- Kitchen with breakfast area and sink overlooking the great room, quartz countertops in "Carrera Retro", subway tile backsplash in "Desert Gray" set in a herringbone pattern, white shaker cabinets, and pantry; Stainless steel microwave, dishwasher, and gas range.
- Rear covered porch is easily accessible through the breakfast area.

...Read More Online

About The Community.

Grayson Park is a beautiful community in Leland, North Carolina within Brunswick County. Only 12 minutes to downtown Wilmington and surrounded by all the city and coast have to offer! Grayson Park offers an attractive natural setting with abundant wooded areas and ponds. Amenities include a clubhouse with a catering kitchen; a competition-size swimming pool and kiddie pool; lighted tennis courts; playground; sidewalks; and walking trails! Visit Grayson Park today and find a place to call home!

...Read More Online

Prices, plans, dimensions, features, specifications, materials, and availability of homes or communities are subject to change without notice or obligation. Illustrations are artists depictions only and may differ from completed improvements. All prices subject to change without notice. Please contact your sales associate before writing an offer.

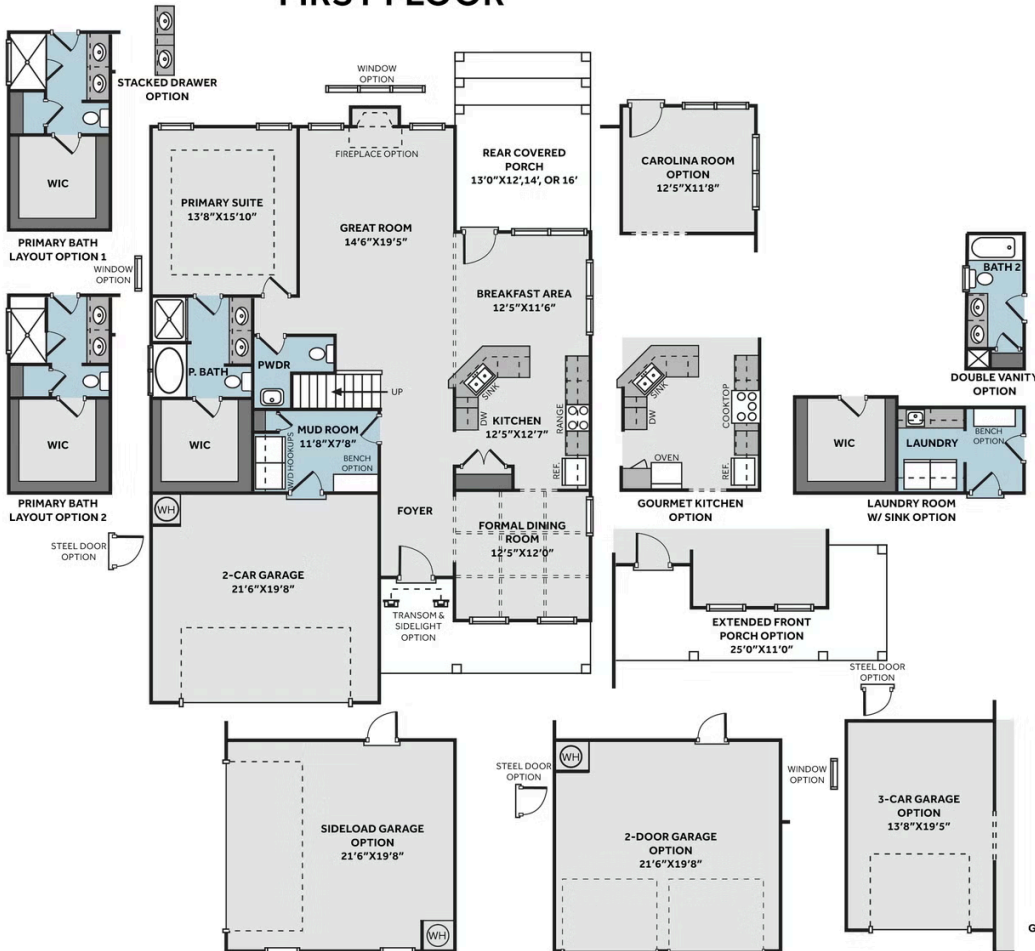


ARCHIVED 2/21/2025

THE GRANVILLE

CC2680

FIRST FLOOR



SECOND FLOOR

