



2735 Longleaf Pine Circle
Leland, NC 28451

GRAYSON PARK - FONTANA

CONTACT OUR NEW HOME SPECIALISTS

MAGGIE & JESSICA

Call Us @ 910-405-8311

info@cavinessandcates.com



Priced

\$419,900

2,308 Sq Ft

2.0 Story

4 Beds

2.5 Baths

2 Car Garage

Primary Bedroom: Down

About 2735 Longleaf Pine Circle

- Kitchen with island and bar seating, white shaker cabinets, granite countertops in "Luna Pearl", subway tile in "Desert Gray" set in a brick pattern, pantry cabinet; Stainless steel microwave, dishwasher, and gas range.
- Great room with gas fireplace with a decorative mantle and a granite surround in "Absolute Black"
- Covered porch makes the perfect outdoor space and is easily accessible through the great room.
- First-floor Primary Suite with tray ceiling and crown molding; Primary Bathroom with access to walk-in closet, dual sinks with quartz countertop in "Niagara", white shaker cabinets with center drawer

...Read More Online

About The Community.

Grayson Park is a beautiful community in Leland, North Carolina within Brunswick County. Only 12 minutes to downtown Wilmington and surrounded by all the city and coast have to offer! Grayson Park offers an attractive natural setting with abundant wooded areas and ponds. Amenities include a clubhouse with a catering kitchen; a competition-size swimming pool and kiddie pool; lighted tennis courts; playground; sidewalks; and walking trails! Visit Grayson Park today and find a place to call home!

...Read More Online

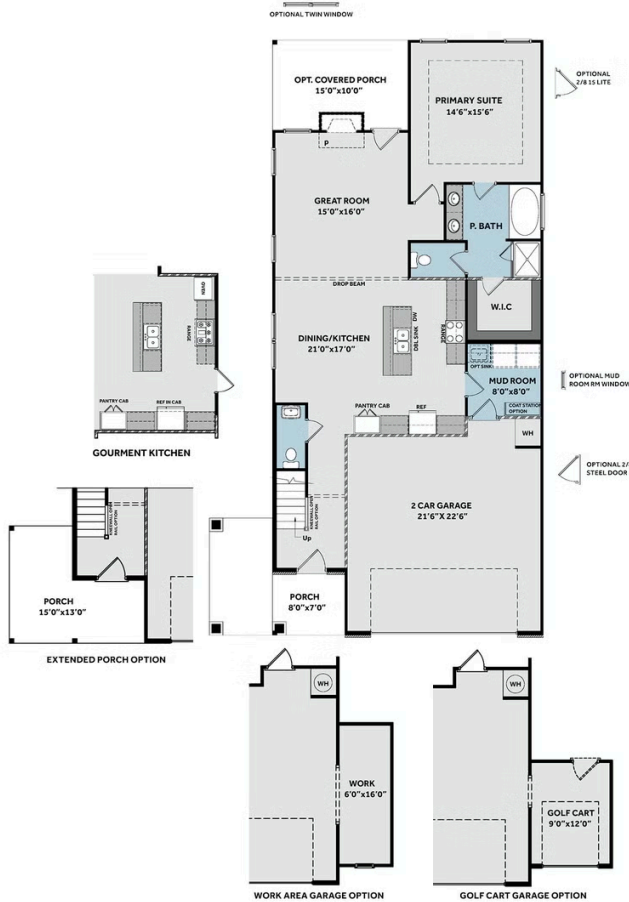
Prices, plans, dimensions, features, specifications, materials, and availability of homes or communities are subject to change without notice or obligation. Illustrations are artists depictions only and may differ from completed improvements. All prices subject to change without notice. Please contact your sales associate before writing an offer.



THE FONTANA

CC2308

FIRST FLOOR



SECOND FLOOR

