



2817 Longleaf Pine Circle  
 Leland, NC 28451  
**GRAYSON PARK - DOGWOOD**

CONTACT OUR NEW HOME SPECIALISTS  
**MAGGIE & JESSICA**  
 Call Us @ 910-405-8311  
 info@cavinessandcates.com



**Priced**

**\$399,900**

- 1,863 Sq Ft
- 1.0 Story
- 3 Beds
- 2.0 Baths
- 2 Car Garage
- Primary Bedroom: Down

**About 2817 Longleaf Pine Circle**

\*\$10,000 rate buydown or price reduction available!

- Open kitchen with dining room with views to the backyard, island with sink overlooking the great room, granite countertops in "Azul Platino", natural stone mosaic backsplash set in a herringbone pattern, white shaker cabinets, and pantry; Stainless steel microwave, dishwasher, and gas range.
- Great room with gas log fireplace w

...Read More Online

**About The Community.**

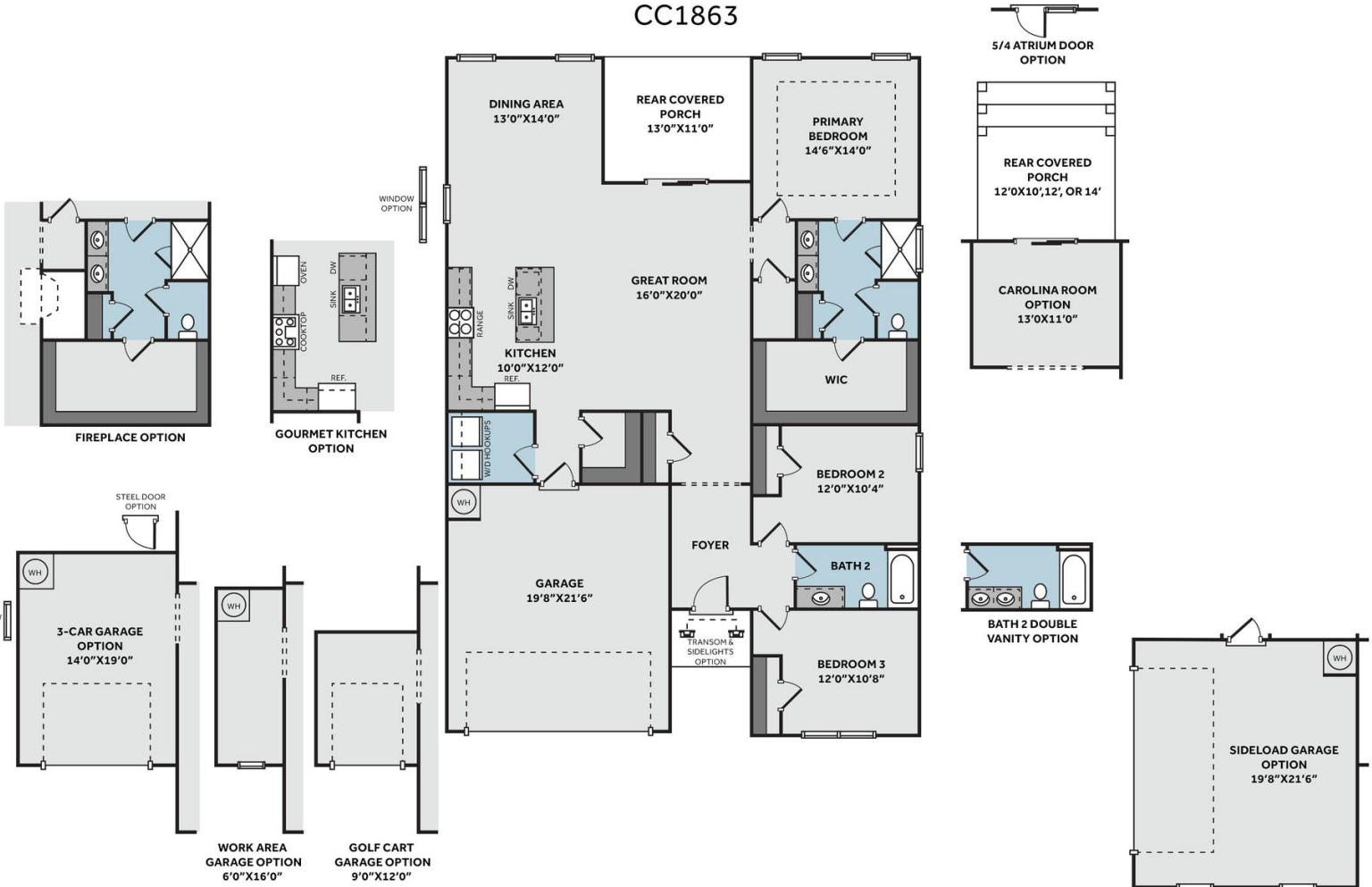
Grayson Park is a beautiful community in Leland, North Carolina within Brunswick County. Only 12 minutes to downtown Wilmington and surrounded by all the city and coast have to offer! Grayson Park offers an attractive natural setting with abundant wooded areas and ponds. Amenities include a clubhouse with a catering kitchen; a competition-size swimming pool and kiddie pool; lighted tennis courts; playground; sidewalks; and walking trails! Visit Grayson Park today and find a place to call home!

...Read More Online

Prices, plans, dimensions, features, specifications, materials, and availability of homes or communities are subject to change without notice or obligation. Illustrations are artists depictions only and may differ from completed improvements. All prices subject to change without notice. Please contact your sales associate before writing an offer.



**THE DOGWOOD**  
CC1863



Prices, plans, dimensions, features, specifications, materials, and availability of homes or communities are subject to change without notice or obligation. Illustrations are artists depictions only and may differ from completed improvements. All prices subject to change without notice. Please contact your sales associate before writing an offer.

