



2829 Longleaf Pine Circle
Leland, NC 28451

GRAYSON PARK - CLAYTON

CONTACT OUR NEW HOME SPECIALISTS

MAGGIE & JESSICA

Call Us @ 910-405-8311

info@cavinessandcates.com



Priced

\$388,900

ARCHIVED 07/07/2022 - Elevation D

2,560 Sq Ft

2.0 Story

4 Beds

3.5 Baths

2 Car Garage

Primary Bedroom: Down

About 2829 Longleaf Pine Circle

- Primary suite on first floor with tray ceiling & crown molding, dual sinks with quartz countertops in "Niagara", garden soaking tub and separate shower with tile surround, linen closet, tile flooring, private water closet, and walk-in closet.
- Great room with gas log fireplace with decorative mantle and granite surround in "Absolute Black".
- Covered porch creates the perfect outdoor living space.
- Elegant formal Dining Room painted in Sherwin Williams Oyster Bay with coffered ceiling and picture frame wainscoting detail.

[...Read More Online](#)

About The Community.

Grayson Park is a beautiful community in Leland, North Carolina within Brunswick County. Only 12 minutes to downtown Wilmington and surrounded by all the city and coast have to offer! Grayson Park offers an attractive natural setting with abundant wooded areas and ponds. Amenities include a clubhouse with a catering kitchen; a competition-size swimming pool and kiddie pool; lighted tennis courts; playground; sidewalks; and walking trails! Visit Grayson Park today and find a place to call home!

[...Read More Online](#)

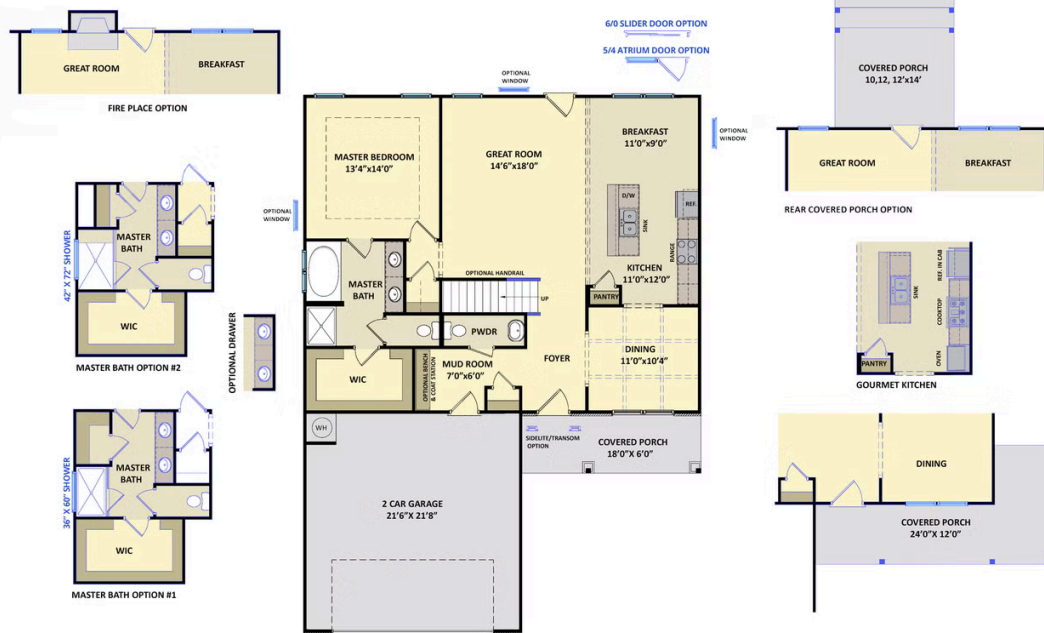
Prices, plans, dimensions, features, specifications, materials, and availability of homes or communities are subject to change without notice or obligation. Illustrations are artists depictions only and may differ from completed improvements. All prices subject to change without notice. Please contact your sales associate before writing an offer.



ARCHIVED 07/07/2022

The Clayton CC2560

FIRST FLOOR



SECOND FLOOR

