



2842 Longleaf Pine Circle
Leland, NC 28451

GRAYSON PARK - DRAYTON

CONTACT OUR NEW HOME SPECIALISTS

MAGGIE & JESSICA

Call Us @ 910-405-8311

info@cavinessandcates.com



Priced

\$344,423

Elevation D

2,325 Sq Ft

2.0 Story

4 Beds

2.5 Baths

2 Car Garage

Primary Bedroom: Up

About 2842 Longleaf Pine Circle

- Great room features a natural gas fireplace with a decorative mantle and a granite surround in Absolute Black.
- Kitchen open to breakfast area and great room with island, white shaker cabinets, granite countertops in "Azul Platino", subway tile backsplash in "Desert Grey" set in brick pattern, and pantry; Stainless steel microwave, dishwasher, and gas range.
- Formal dining room painted in Sherwin Williams "Rainwashed" with picture frame wainscoting detail and coffered ceiling.

...Read More Online

About The Community.

Grayson Park is a beautiful community in Leland, North Carolina within Brunswick County. Only 12 minutes to downtown Wilmington and surrounded by all the city and coast have to offer! Grayson Park offers an attractive natural setting with abundant wooded areas and ponds. Amenities include a clubhouse with a catering kitchen; a competition-size swimming pool and kiddie pool; lighted tennis courts; playground; sidewalks; and walking trails! Visit Grayson Park today and find a place to call home!

...Read More Online

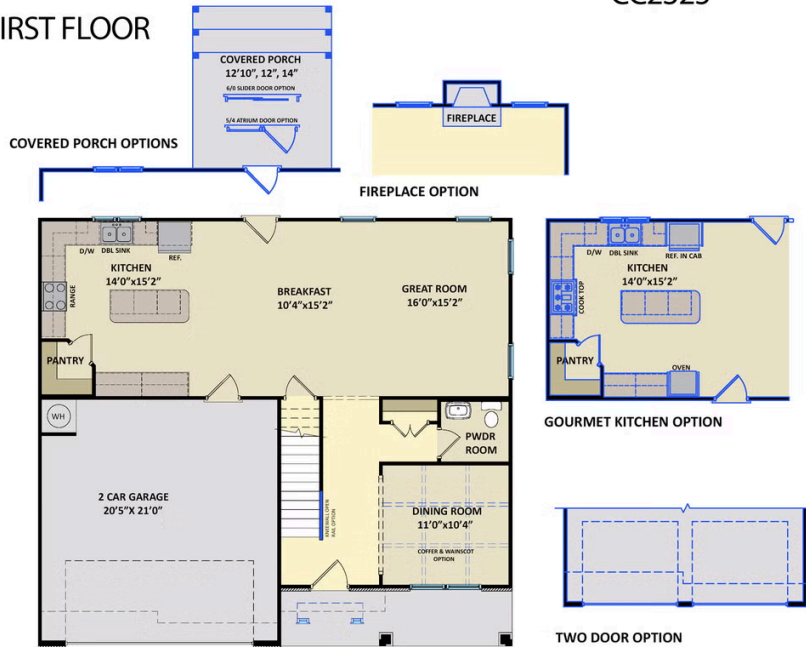
Prices, plans, dimensions, features, specifications, materials, and availability of homes or communities are subject to change without notice or obligation. Illustrations are artists depictions only and may differ from completed improvements. All prices subject to change without notice. Please contact your sales associate before writing an offer.



ARCHIVED 8/22/2023

The Drayton CC2325

FIRST FLOOR



SECOND FLOOR

