



Priced

\$372,900

Elevation C

2,355 Sq Ft

2.0 Story

4 Beds

2.5 Baths

2 Car Garage

Master Bedroom: Up

About 5752 Orchardgrass Road

- The entrance of this 2 story home showcases a 2 story ceiling with a second-floor overlooking the entryway.
- Eat-in kitchen with large island and white shaker cabinets, "Santa Cecilia Light" granite countertops, "Arctic White" subway tile backsplash, walk-in pantry, built-in desk space with window over the kitchen sink; Stainless steel microwave, dishwasher, and gas range.
- Breakfast area with access to covered porch.
- Great room with gas fireplace featuring a decorative mantle and "Absolute Black" granite surround.

...Read More Online

About The Community.

Grayson Park is a beautiful community in Leland, North Carolina within Brunswick County. Only 12 minutes to downtown Wilmington and surrounded by all the city and coast have to offer! Grayson Park offers an attractive natural setting with abundant wooded areas and ponds. Amenities include a clubhouse with a catering kitchen; a competition-size swimming pool and kiddie pool; lighted tennis courts; playground; sidewalks; and walking trails! Visit Grayson Park today and find a place to call home!

...Read More Online

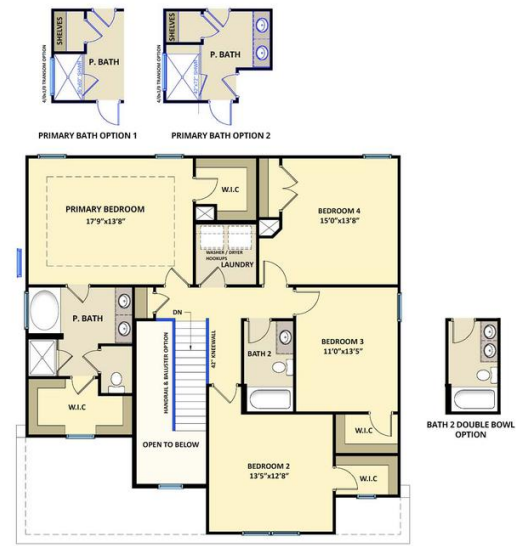
Prices, plans, dimensions, features, specifications, materials, and availability of homes or communities are subject to change without notice or obligation. Illustrations are artists depictions only and may differ from completed improvements. All prices subject to change without notice. Please contact your sales associate before writing an offer.

The Brunswick CC2355

FIRST FLOOR



SECOND FLOOR



Prices, plans, dimensions, features, specifications, materials, and availability of homes or communities are subject to change without notice or obligation. Illustrations are artists depictions only and may differ from completed improvements. All prices subject to change without notice. Please contact your sales associate before writing an offer.

