



496 Black Duck Lane  
Lillington, NC 27546

**DUCKS LANDING - CARDINAL**

CONTACT OUR NEW HOME SPECIALISTS

**MAGGIE & JESSICA**

Call Us @ 910-405-8311

info@cavinessandcates.com



**Priced**

**\$345,000**

Elevation C - Artistic Rendering for  
Representation Purposes Only

1,784 Sq Ft

2.0 Story

3 Beds

2.5 Baths

2 Car Garage

Primary Bedroom: Up

## About 496 Black Duck Lane

- Step into the welcoming foyer with a convenient powder room, leading into a spacious great room that flows seamlessly into the kitchen and dining area.
- The kitchen features a center island with sink, granite countertops, shaker cabinets, stainless steel appliances, and a pantry.
- The dining area opens to the grill patio through sliding glass doors—perfect for indoor-outdoor living.
- Upstairs, the primary suite offers a private retreat while its en-suite bathroom features a dual sink

...Read More Online

## About The Community.

*Duck's Landing.... Where Quiet Comes Standard.*

Nestled in the peaceful countryside of Lillington, North Carolina, our cozy community offers the calm and quiet of rural living without leaving convenience behind. Just minutes from Fort Bragg, Lillington, Raleigh, and Fayetteville, you can breathe easier while staying close to everything that matters. [This is why we love living in Lillington.](#)

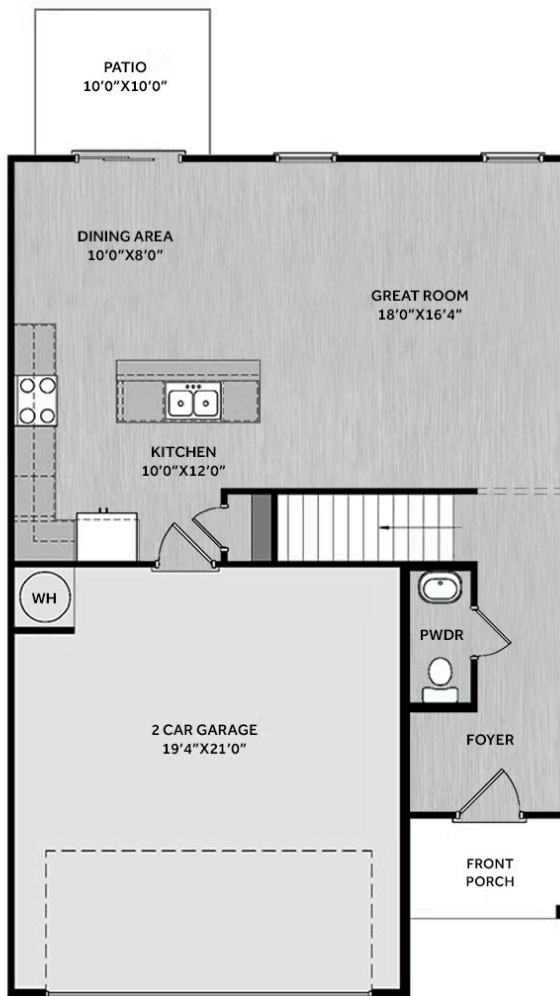
Choose from thoughtfully curated home plans featuring options like first-floor primary suites, home offices, mud rooms, and charming farmhouse or craftsman-style exteriors. Whether you select a quick move-in home or design your own from our carefully curated packages, every home undergoes a 400+

...Read More Online

Prices, plans, dimensions, features, specifications, materials, and availability of homes or communities are subject to change without notice or obligation. Illustrations are artists depictions only and may differ from completed improvements. All prices subject to change without notice. Please contact your sales associate before writing an offer.



## FIRST FLOOR



## SECOND FLOOR

