



3,224 Sq. Ft.

2 Stories

5 - 6 Bed

4.5 Bath

2 - 3 Garage

Master Bed: Down

## About Beaufort

This floorplan features a master suite and in-law suite on the first floor!

- Master suite with two walk-in closets, separate his and hers sinks, garden tub, walk-in shower, private water closet and linen closet
- Great room with fireplace
- Eat-in kitchen with island, pantry cabinets, view to great room and access to optional covered porch
- Formal dining room with coffered ceiling and wainscoting detail option
- Half bath.

...Read More Online



Coastal



Elevation B



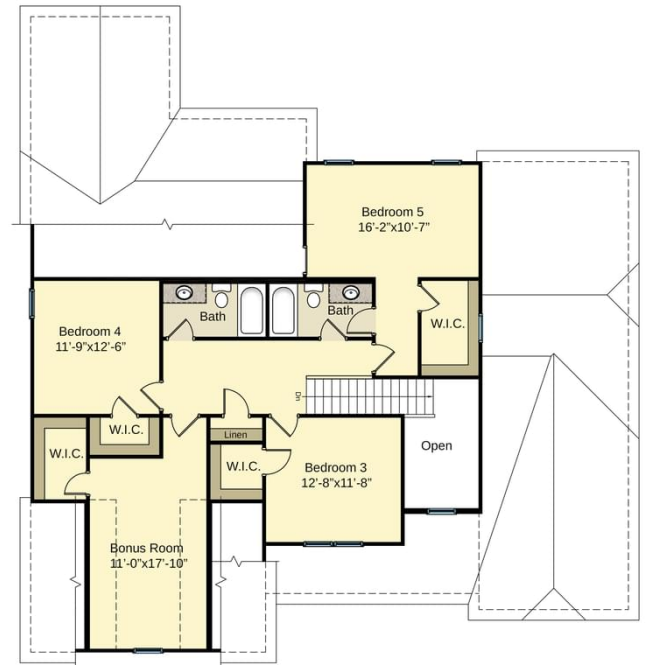
Elevation C

**The Beaufort**  
CC3224

**FIRST FLOOR**



**SECOND FLOOR**



Prices, plans, dimensions, features, specifications, materials, and availability of homes or communities are subject to change without notice or obligation. Illustrations are artists depictions only and may differ from completed improvements. All prices subject to change without notice. Please contact your sales associate before writing an offer.