



221 Clear View School Road
Richlands, NC 28540

HAYDEN PLACE - GRANVILLE

CONTACT OUR NEW HOME SPECIALISTS

MAGGIE & JESSICA

Call Us @ 910-405-8311

info@cavinessandcates.com



Elevation F

2,876 Sq Ft

2.0 Story

4 Beds

2.5 Baths

2 Car Garage

Primary Bedroom: Down

About 221 Clear View School Road

Model Home coming summer 2024!

- Blinds throughout home!
- Great room with electric fireplace with accent board and batten wall painted in Sherwin Williams "Iron Ore".
- Formal dining room painted in Sherwin Williams "Dorian Grey" with coffered ceiling and wainscoting detail.

...Read More Online

About The Community.

Built with families in mind, Hayden Place offers nature views, a clubhouse for gathering with neighbors and friends, and is walkable to the local elementary school. Your new *Place to Call Home* is built with the quality of construction you've come to expect from a Caviness & Cates home; including our in-house 1-2-10 year home warranty, thoughtfully designed home plans, and stunning included design features.

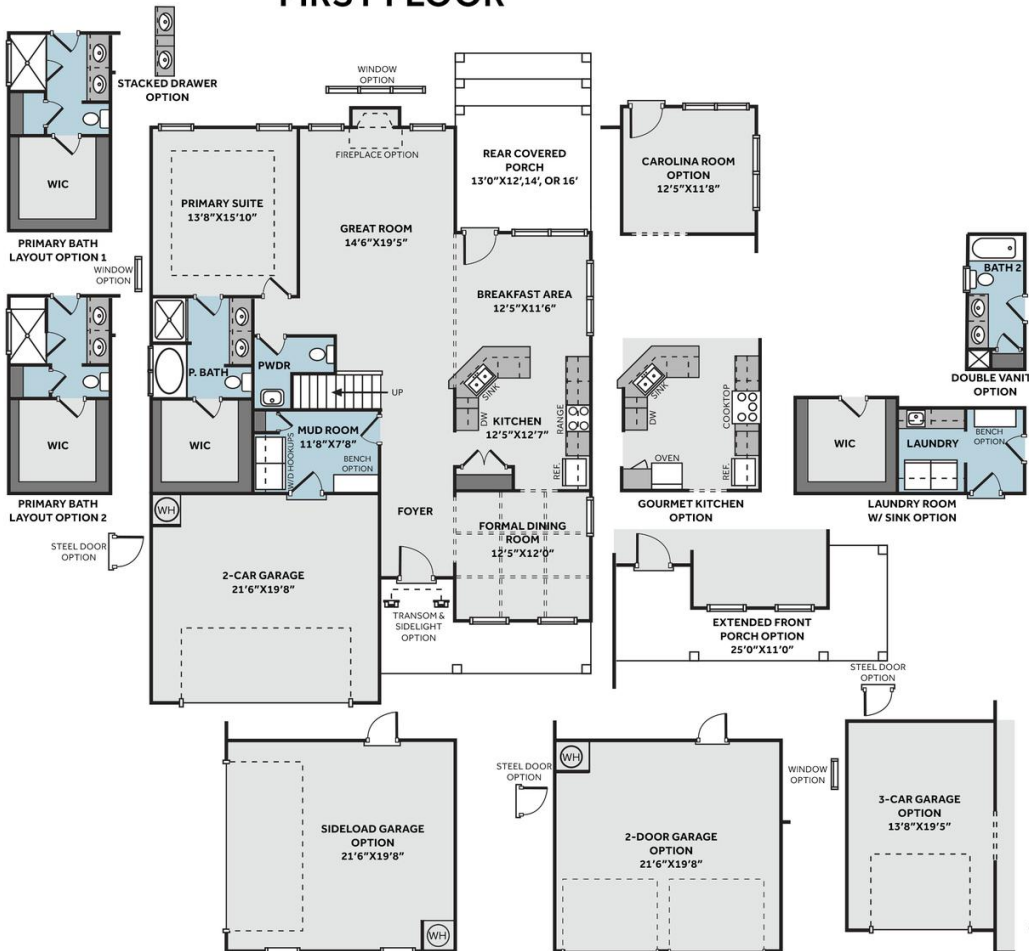
...Read More Online

Prices, plans, dimensions, features, specifications, materials, and availability of homes or communities are subject to change without notice or obligation. Illustrations are artists depictions only and may differ from completed improvements. All prices subject to change without notice. Please contact your sales associate before writing an offer.

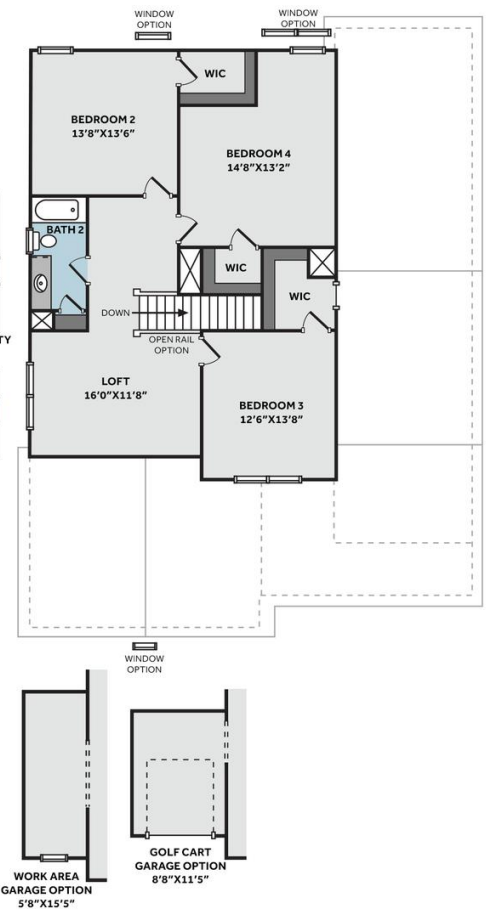


THE GRANVILLE CC2680

FIRST FLOOR



SECOND FLOOR



Prices, plans, dimensions, features, specifications, materials, and availability of homes or communities are subject to change without notice or obligation. Illustrations are artists depictions only and may differ from completed improvements. All prices subject to change without notice. Please contact your sales associate before writing an offer.

