



13 Skidaway Lane
Rocky Point, NC 28457
WYLIE BRANCH - OAKWINDS

CONTACT OUR NEW HOME SPECIALISTS
MAGGIE & JENN
Call Us @ 910-405-8311
maggie@cavinessandcates.com



Priced
\$386,927

Elevation F
2,972 Sq Ft
2.0 Story
5 Beds
3.5 Baths
2 Car Garage
Master Bedroom: Down

About 13 Skidaway Lane

- Great Room with gas log fireplace and access to optional covered porch
- Staircase with metal balusters
- Kitchen features granite countertops, subway tile backsplash, white cabinets, stainless steel microwave, dishwasher, and smooth top range, breakfast area, island overlooking the great room, sink with views to the backyard, and pantry
- Formal dining room with coffered ceiling and wainscoting detail

...Read More Online

About The Community.

Our newest community in the Topsail school district! These Caviness & Cates homes will be set on spacious, +/- half acre home sites! Wylie Branch is located 30 minutes from Topsail Beach and less than 20 minutes from Wilmington!

...Read More Online

Prices, plans, dimensions, features, specifications, materials, and availability of homes or communities are subject to change without notice or obligation. Illustrations are artists depictions only and may differ from completed improvements. All prices subject to change without notice. Please contact your sales associate before writing an offer.

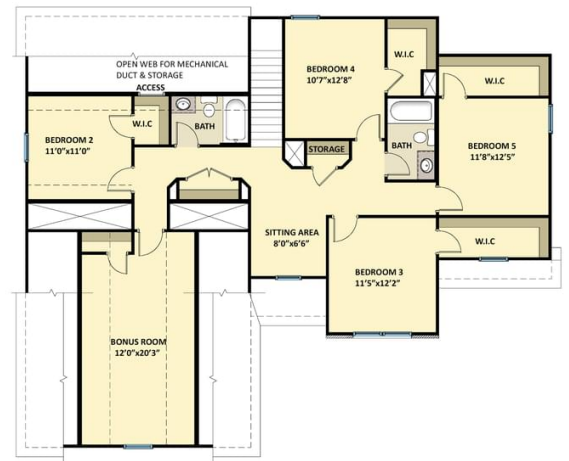


The Oakwinds
CC2964

FIRST FLOOR



SECOND FLOOR



Prices, plans, dimensions, features, specifications, materials, and availability of homes or communities are subject to change without notice or obligation. Illustrations are artists depictions only and may differ from completed improvements. All prices subject to change without notice. Please contact your sales associate before writing an offer.

