



298 Habersham Avenue
Rocky Point, NC 28457

WYLIE BRANCH - BLADEN

CONTACT OUR NEW HOME SPECIALIST

JENN HUNTOON

Call Us @ 910-405-8311

jenn@cavinessandcates.com



Priced

\$359,900

Elevation C

3,107 Sq Ft

1.5 Story

5 Beds

3.0 Baths

2 Car Garage

Master Bedroom: Down

About 298 Habersham Avenue

- This home plan features a large covered front porch and opens up to the foyer, access to the flex room with French doors on one side, and a formal dining room on the other
- Elegant formal dining room with stunning coffered ceiling and wainscoting detail
- Open kitchen features granite countertops; subway tile backsplash in brick pattern; white cabinets; stainless steel microwave, dishwasher, and smooth cooktop range; satin nickel finishes; sink overlooking the great room; large center island, and breakfast area with access to the covered porch!

...Read More Online

About The Community.

Our newest community in the Topsail school district! These Caviness & Cates homes will be set on spacious, +/- half acre home sites! Wylie Branch is located 30 minutes from Topsail Beach and less than 20 minutes from Wilmington!

...Read More Online

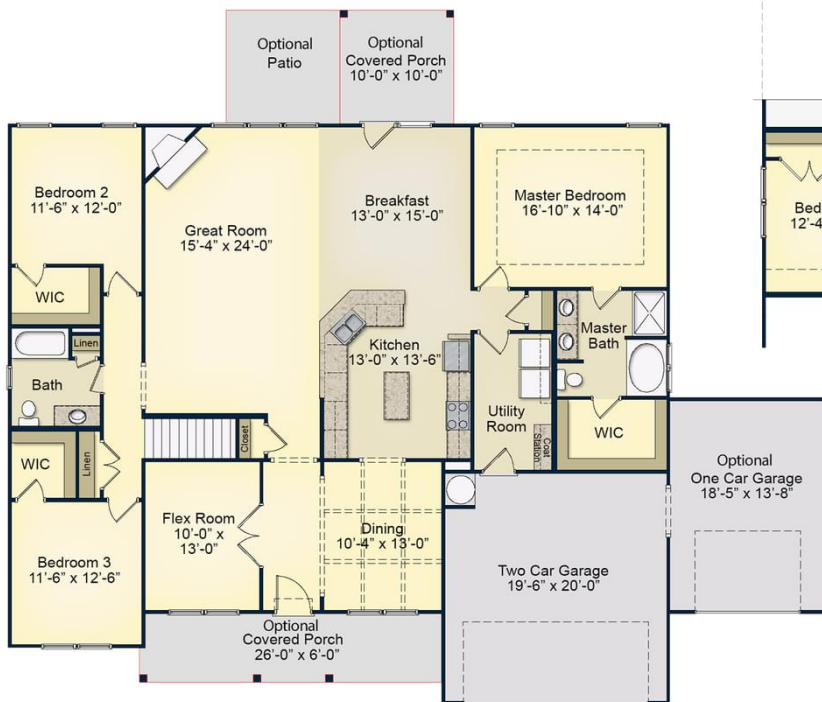
Prices, plans, dimensions, features, specifications, materials, and availability of homes or communities are subject to change without notice or obligation. Illustrations are artists depictions only and may differ from completed improvements. All prices subject to change without notice. Please contact your sales associate before writing an offer.



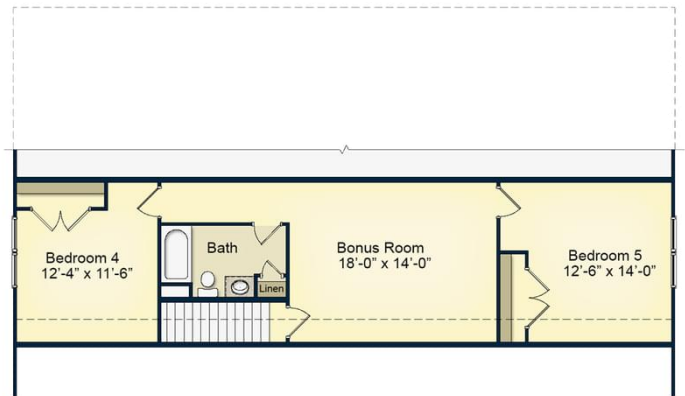
The Bladen

CC3107

FIRST FLOOR



SECOND FLOOR



Prices, plans, dimensions, features, specifications, materials, and availability of homes or communities are subject to change without notice or obligation. Illustrations are artists depictions only and may differ from completed improvements. All prices subject to change without notice. Please contact your sales associate before writing an offer.