



352 Habersham Avenue  
Rocky Point, NC 28457

WYLIE BRANCH - CAMBRIDGE

CONTACT OUR NEW HOME SPECIALISTS

**MAGGIE & JENN**

Call Us @ 910-405-8311

maggie@cavinessandcates.com



Elevation C

2,432 Sq Ft

1.5 Story

4 Beds

3.0 Baths

2 Car Garage

Master Bedroom: Down

## About 352 Habersham Avenue

- Spacious great room
- Kitchen features stainless steel microwave, dishwasher, and smooth cooktop range, breakfast area, satin nickel finishes, pantry, and sink overlooking the great room
- Master suite with walk-in closet, garden tub and separate shower with tile surround, his and hers sinks
- 2 additional bedrooms on first floor with closets and hall access to full bathroom
- Laundry room with linen closet

...Read More Online

## About The Community.

Our newest community in the Topsail school district! These Caviness & Cates homes will be set on spacious, +/- half acre home sites! Wylie Branch is located 30 minutes from Topsail Beach and less than 20 minutes from Wilmington!

...Read More Online

Prices, plans, dimensions, features, specifications, materials, and availability of homes or communities are subject to change without notice or obligation. Illustrations are artists depictions only and may differ from completed improvements. All prices subject to change without notice. Please contact your sales associate before writing an offer.

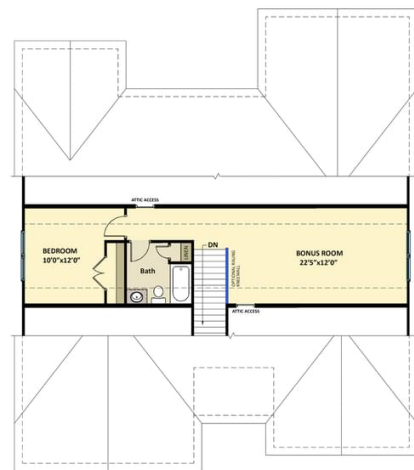


## The Cambridge CC1850

### FIRST FLOOR



### SECOND FLOOR



Prices, plans, dimensions, features, specifications, materials, and availability of homes or communities are subject to change without notice or obligation. Illustrations are artists depictions only and may differ from completed improvements. All prices subject to change without notice. Please contact your sales associate before writing an offer.