



820 Habersham Avenue
Rocky Point, NC 28457

WYLIE BRANCH - BRUNSWICK

CONTACT OUR NEW HOME SPECIALISTS

MAGGIE & JESSICA

Call Us @ 910-405-8311

info@cavinessandcates.com



Priced

\$324,943

Elevation K

2,355 Sq Ft

2.0 Story

4 Beds

2.5 Baths

2 Car Garage

Primary Bedroom: Up

About 820 Habersham Avenue

- The entrance of this 2 story home showcases a 2 story ceiling with hanging decorative light fixture
- Eat-in kitchen with large island features granite countertops, subway tile backsplash, white cabinets, stainless steel microwave, dishwasher, and smooth cooktop range, satin nickel finishes, pantry, and window over sink with views to the backyard
- Bench and cubbies in garage entry
- Covered porch creates a perfect outdoor space
- Great room with gas log fireplace

...Read More Online

About The Community.

Our new home community in the Topsail school district! These Caviness & Cates homes will be set on spacious, +/- half-acre home sites! Wylie Branch is located 30 minutes from Topsail Beach and less than 20 minutes from Wilmington!

...Read More Online

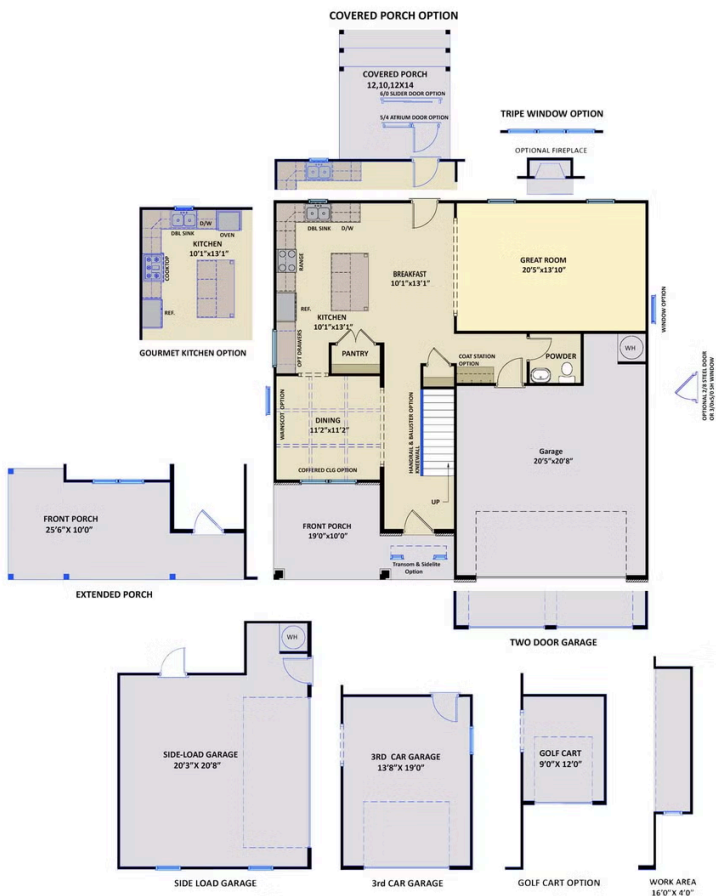
Prices, plans, dimensions, features, specifications, materials, and availability of homes or communities are subject to change without notice or obligation. Illustrations are artists depictions only and may differ from completed improvements. All prices subject to change without notice. Please contact your sales associate before writing an offer.



ARCHIVED 8/18/2023

The Brunswick CC2355

FIRST FLOOR



SECOND FLOOR

