



245 Centerline Drive
Selma, NC 27576
EASTOVER - BLADEN

CONTACT OUR NEW HOME SPECIALISTS
MAGGIE & JESSICA
Call Us @ 910-405-8311
info@cavinessandcates.com



Priced

\$560,000

Elevation D

3,142 Sq Ft

1.5 Story

4 Beds

3.0 Baths

3 Car Garage

Primary Bedroom: Down

About 245 Centerline Drive

- Formal dining room painted in Sherwin Williams "Dorian Grey" with wainscoting detail and a coffered ceiling.
- Open kitchen with sink overlooking the great room and center island, granite countertops in "New Caledonia", subway tile backsplash in "Arctic White" set in a brick pattern, white shaker cabinets, and breakfast area; Stainless steel microwave, dishwasher, smooth top range.
- Breakfast area off of kitchen with access to covered deck.
- Great room with a corner gas log fireplace with decorative mantle and granite surround in

...Read More Online

About The Community.

Eastover is a cozy community of just 20 homes. Enjoy the quiet, country living complete with community pond access with the convenience of local shopping, dining, and activities. Do your grocery shopping or curbside pickup less than 10 minutes away at your local Harris Teeter. Frequent local shopping and restaurants are less than a 20-minute drive to charming downtowns Clayton, Selma, and Smithfield. Your commute is easy with quick access to highway 70 and I-95. Find your place to call home in Eastover!

...Read More Online

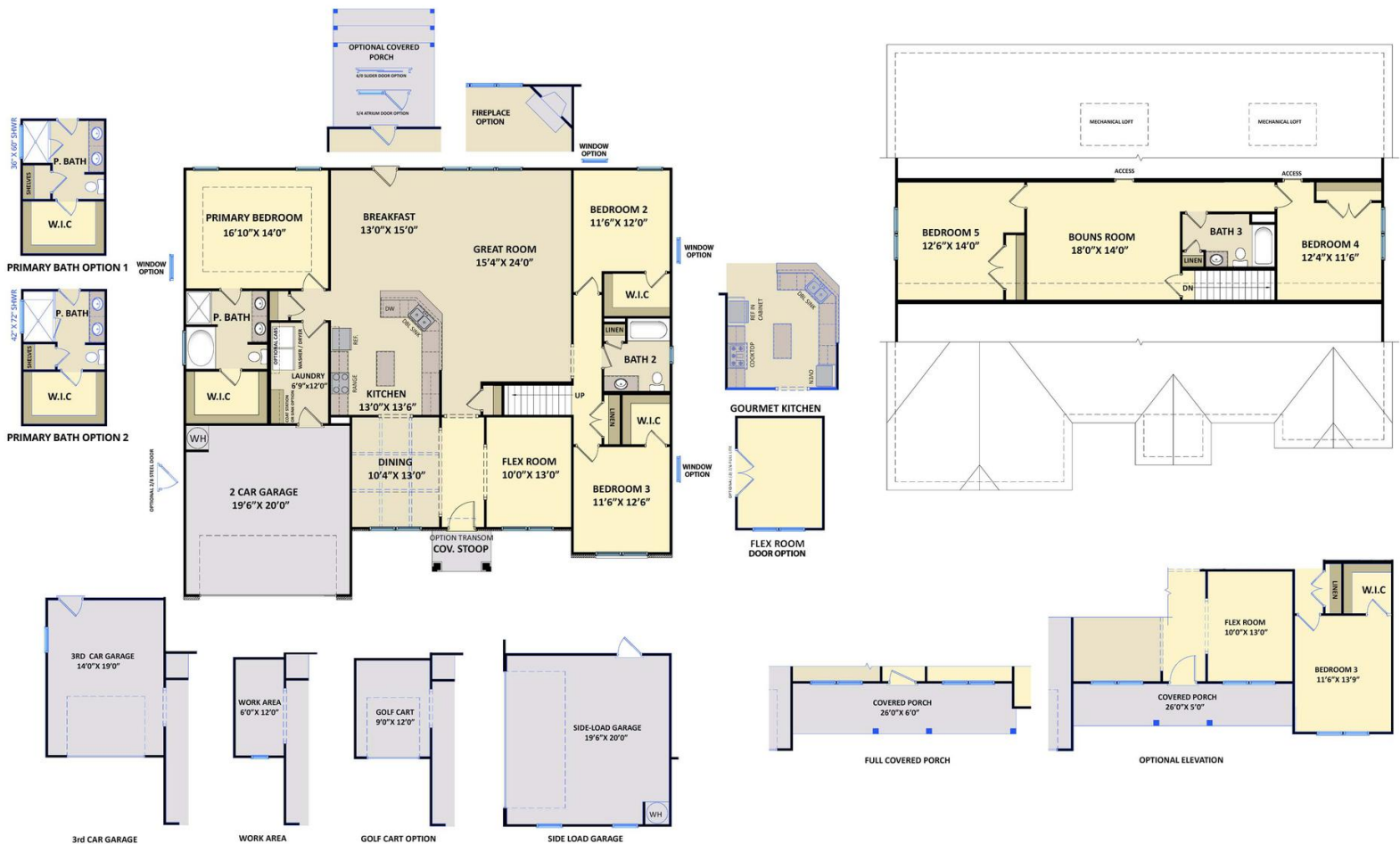
Prices, plans, dimensions, features, specifications, materials, and availability of homes or communities are subject to change without notice or obligation. Illustrations are artists depictions only and may differ from completed improvements. All prices subject to change without notice. Please contact your sales associate before writing an offer.



The Bladen
CC3107

FIRST FLOOR

SECOND FLOOR



Prices, plans, dimensions, features, specifications, materials, and availability of homes or communities are subject to change without notice or obligation. Illustrations are artists depictions only and may differ from completed improvements. All prices subject to change without notice. Please contact your sales associate before writing an offer.

