



109 Crossvine Street  
Selma, NC 27576

EMILY GARDENS - CARDINAL

CONTACT OUR NEW HOME SPECIALISTS

**MAGGIE & JESSICA**

Call Us @ 910-405-8311

info@cavinessandcates.com



**Priced**

**\$314,500**

Elevation F - Artistic Rendering for Representation Purposes Only

1,784 Sq Ft

2.0 Story

3 Beds

2.5 Baths

2 Car Garage

Primary Bedroom: Up

## About 109 Crossvine Street

- Step into the welcoming foyer with a convenient powder room, leading into a spacious great room that flows seamlessly into the kitchen and dining area.
- The kitchen features a center island with sink, "Arctic White" quartz countertops, white shaker cabinets, herringbone backsplash, stainless steel appliances including a microwave, oven, and smooth top range.
- The dining area opens to the grill patio through sliding glass doors—perfect for indoor-outdoor living.

...Read More Online

## About The Community.

Conveniently located just minutes from **I-95** and the future **I-42** (Hwy 70), Emily Gardens offers easy access to everything Johnston County and beyond has to offer. Enjoy the tranquility of rural living while being a short drive from urban excitement—**Raleigh** is only about 30-40 minutes away for work, dining, or entertainment.

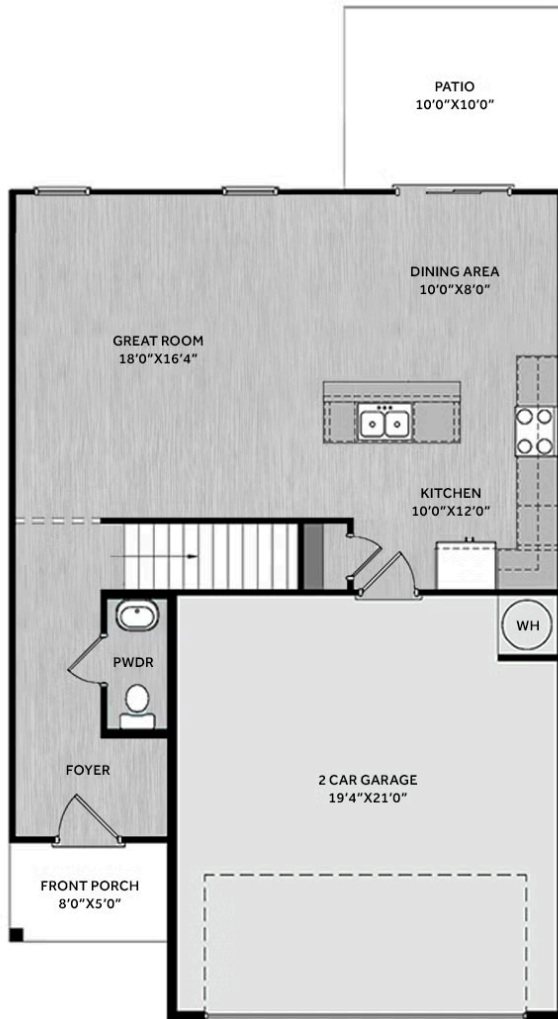
Residents of Emily Gardens enjoy a delightful array of nearby attractions that capture the area's unique blend of history, culture, shopping, and outdoor fun. Just down the road, Hinnant Family Vineyards—North Carolina's largest and oldest muscadine grape vineyard—invites you to relaxed wine tastings.

...Read More Online

Prices, plans, dimensions, features, specifications, materials, and availability of homes or communities are subject to change without notice or obligation. Illustrations are artists depictions only and may differ from completed improvements. All prices subject to change without notice. Please contact your sales associate before writing an offer.



## FIRST FLOOR



## SECOND FLOOR

