



119 Crossvine Street  
Selma, NC 27576

EMILY GARDENS - DRAYTON

CONTACT OUR NEW HOME SPECIALISTS

**MAGGIE & JESSICA**

Call Us @ 910-405-8311

info@cavinessandcates.com



**Priced**

**\$349,900**

Elevation F

2,325 Sq Ft

2.0 Story

4 Beds

2.5 Baths

2 Car Garage

Primary Bedroom: Up


## About 119 Crossvine Street

- Just off the foyer, the dining room showcases a square panel accent wall painted in SW “Gale Force,” along with a coat closet and a convenient half bath.
- The open great room flows seamlessly into the kitchen, complete with a large island, “Azul Platino” granite countertops, white shaker cabinets, a corner pantry, and stainless steel appliances including a microwave, dishwasher, and smooth-top range.
- The breakfast area leads to the grill patio.
- Upstairs, an open loft area provides additional living space, with a nearby linen closet and laundry

...Read More Online

## About The Community.

Conveniently located just minutes from **I-95** and the future **I-42** (Hwy 70), Emily Gardens offers easy access to everything Johnston County and beyond has to offer. Enjoy the tranquility of rural living while being a short drive from urban excitement—**Raleigh** is only about 30-40 minutes away for work, dining, or entertainment.

Residents of Emily Gardens enjoy a delightful array of nearby attractions that capture the area's unique blend of history, culture, shopping, and outdoor fun. Just down the road, Hinnant Family Vineyards—North Carolina's largest and oldest muscadine grape vineyard—invites you to relaxed wine tastings, 

...Read More Online

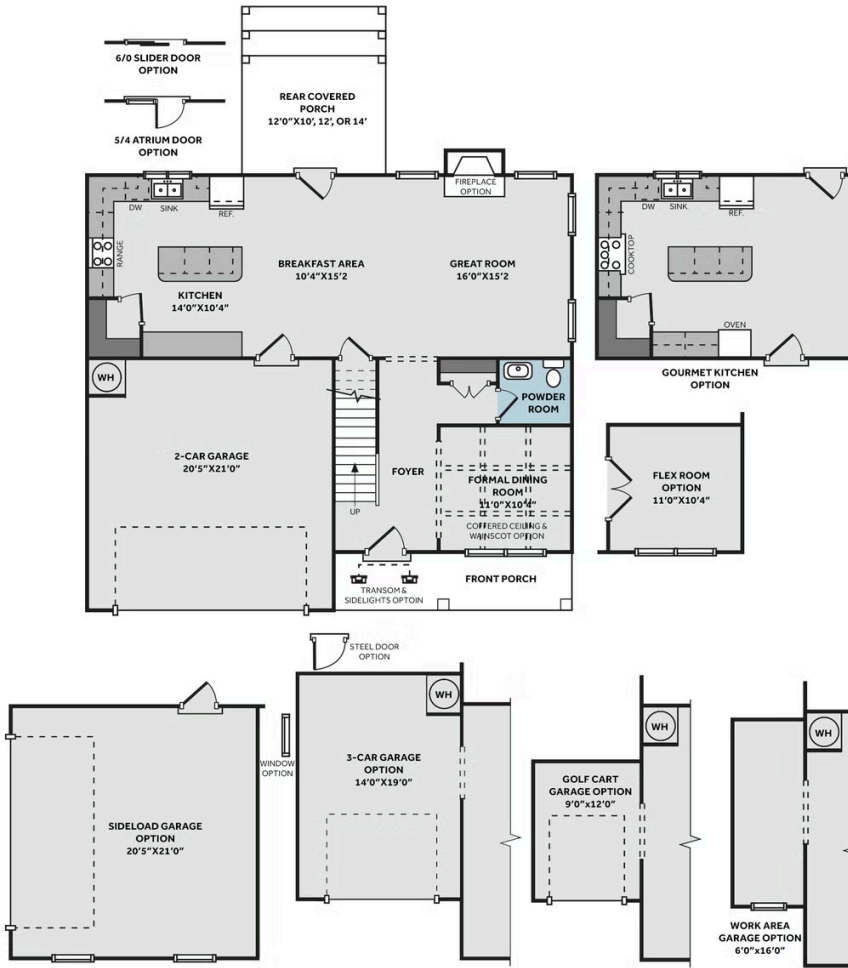
Prices, plans, dimensions, features, specifications, materials, and availability of homes or communities are subject to change without notice or obligation. Illustrations are artists depictions only and may differ from completed improvements. All prices subject to change without notice. Please contact your sales associate before writing an offer.



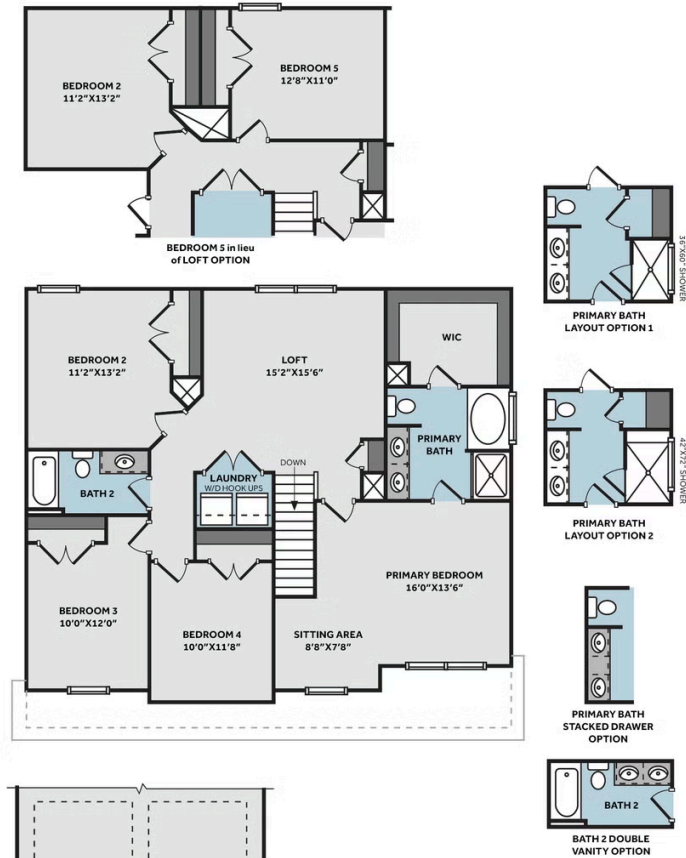
# THE DRAYTON

CC2325

## FIRST FLOOR



## SECOND FLOOR



Prices, plans, dimensions, features, specifications, materials, and availability of homes or communities are subject to change without notice or obligation. Illustrations are artists depictions only and may differ from completed improvements. All prices subject to change without notice. Please contact your sales associate before writing an offer.

